

# **LimagitoXI File Mover Installation Guidelines**

## Download

---

The product name is LimagitoX File Mover. The current version is XI.

It's a good idea to download the latest version of LimagitoXI before we start with the installation.

Since LimagitoX vXI we have a 32bit and 64bit version available:

Download link:

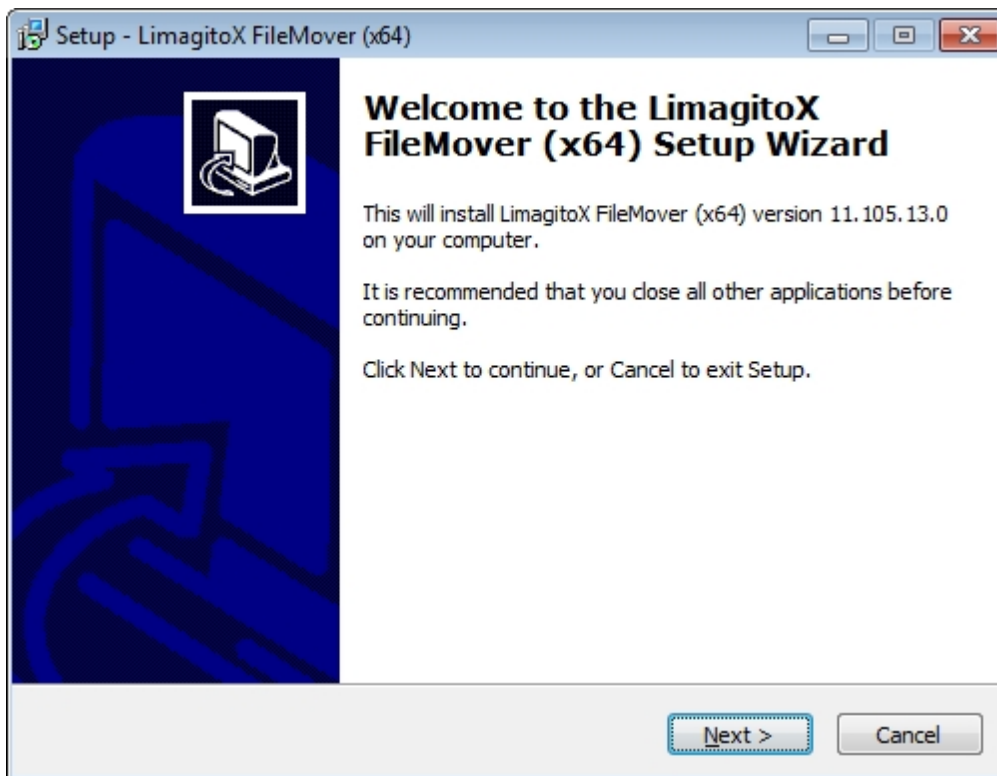
- |                                       |   |
|---------------------------------------|---|
| ○ Latest Snapshot Version 32bit (x86) | <a href="http://www.limagito.com/files/setup.limagitoxi.x86.snap.exe">http://www.limagito.com/files/setup.limagitoxi.x86.snap.exe</a> |
| ○ Latest Snapshot Version 64bit (x64) | <a href="http://www.limagito.com/files/setup.limagitoxi.x64.snap.exe">http://www.limagito.com/files/setup.limagitoxi.x64.snap.exe</a> |
| ○ Latest Stable Version 32bit (x86)   | <a href="http://www.limagito.com/files/setup.limagitoxi.x86.exe">http://www.limagito.com/files/setup.limagitoxi.x86.exe</a>           |
| ○ Latest Stable Version 64bit (x64)   | <a href="http://www.limagito.com/files/setup.limagitoxi.x64.exe">http://www.limagito.com/files/setup.limagitoxi.x64.exe</a>           |

LimagitoX version XI supports Windows 7 and higher.

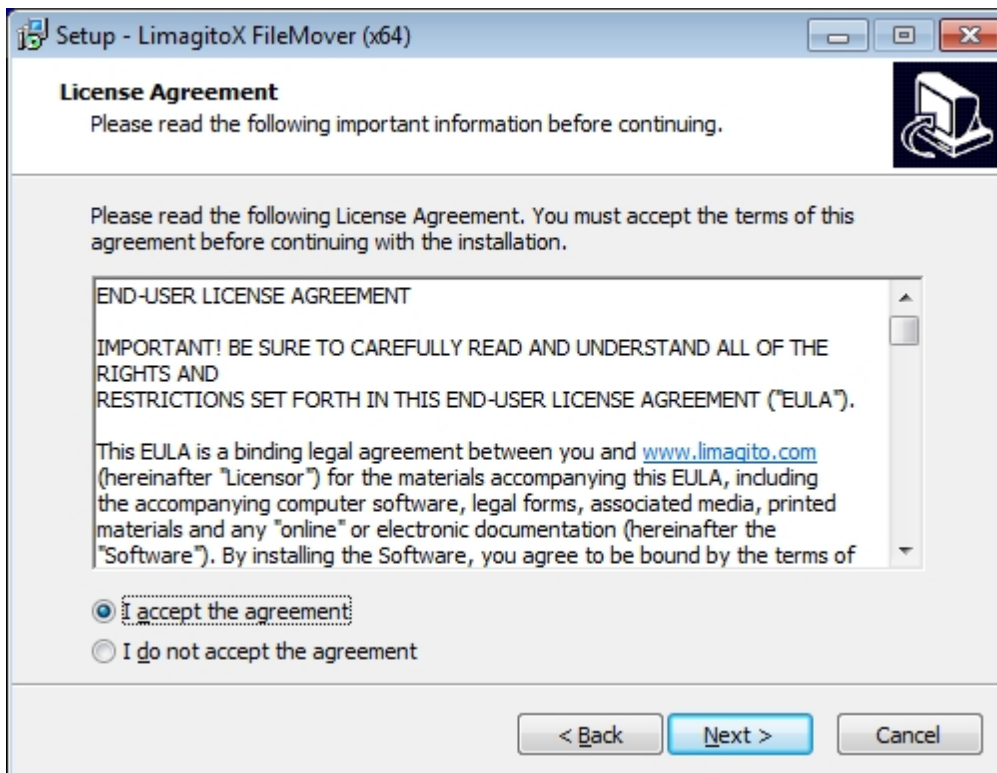
## Setup

---

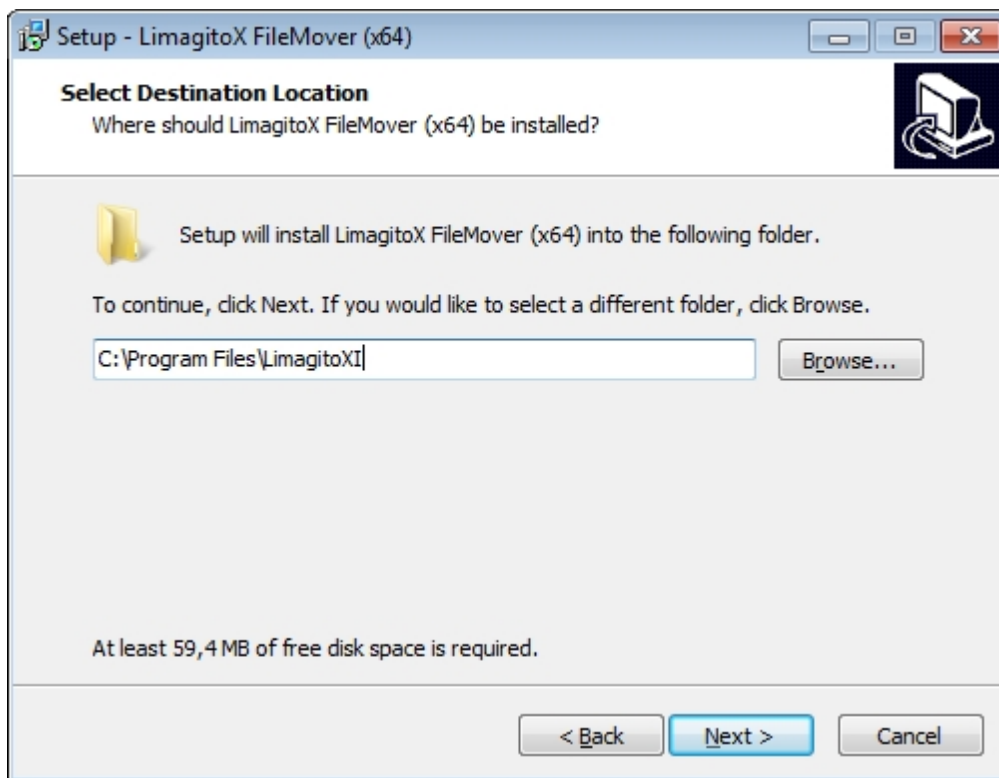
Execute the setup after download. In the first setup screen you'll see the version of our File Mover.



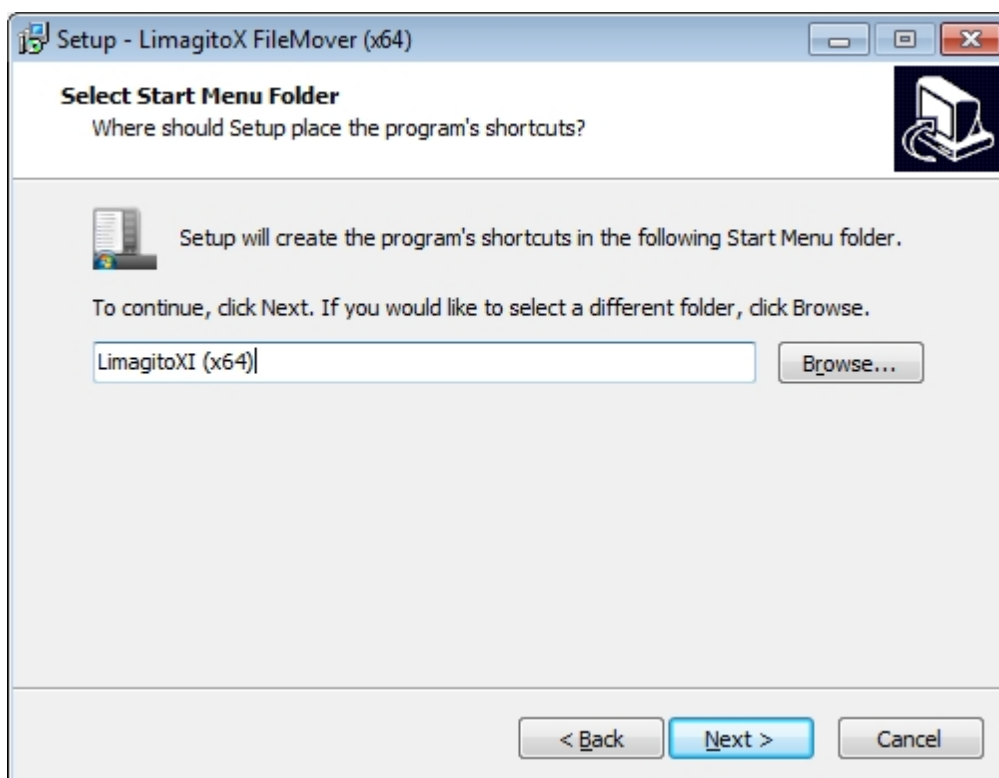
In the second screen you'll need to accept our license agreement, otherwise it isn't possible to continue with the installation.



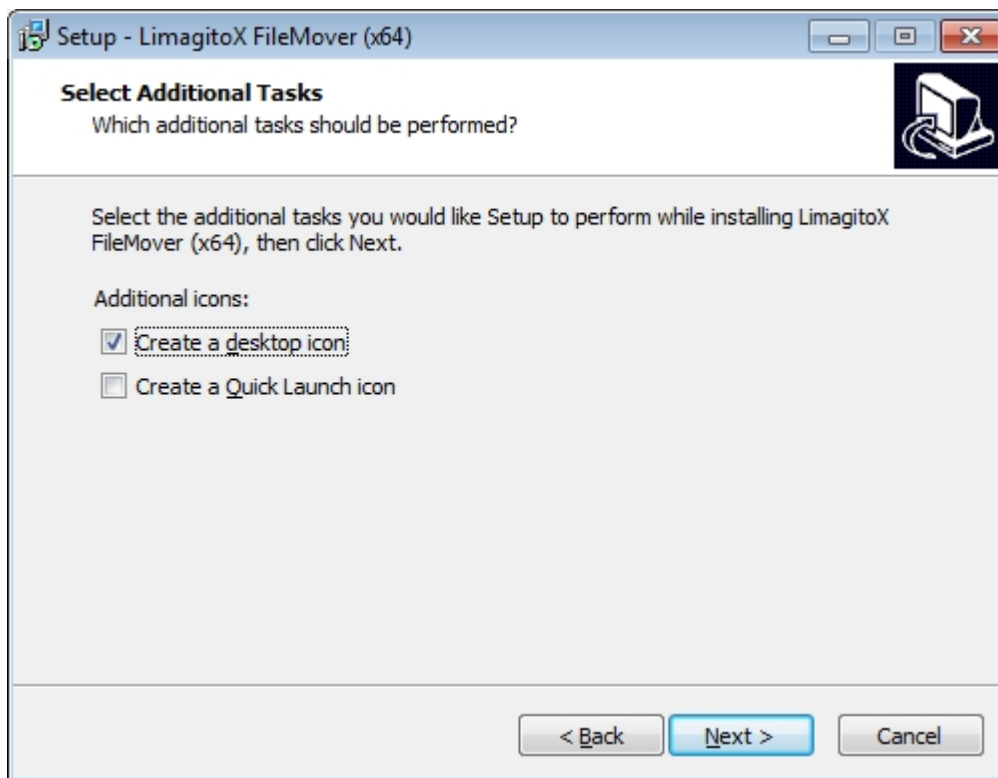
In the third screen you can choose the installation directory (default directory = 'Program Files').



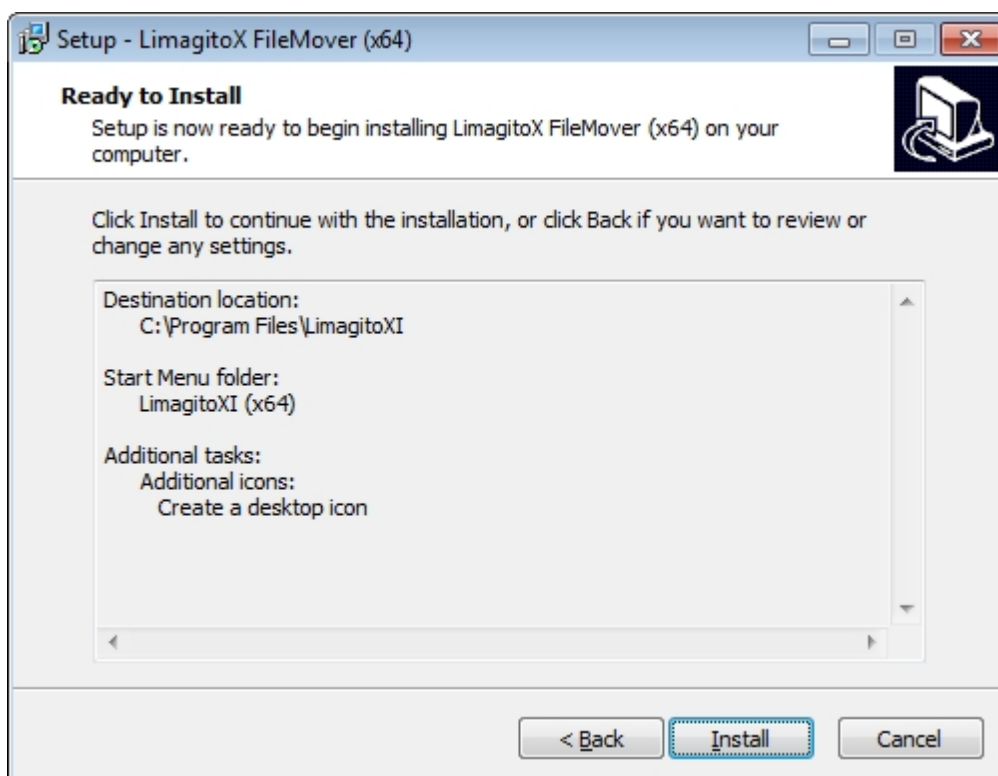
In the fourth screen you can choose the name of the start menu folder



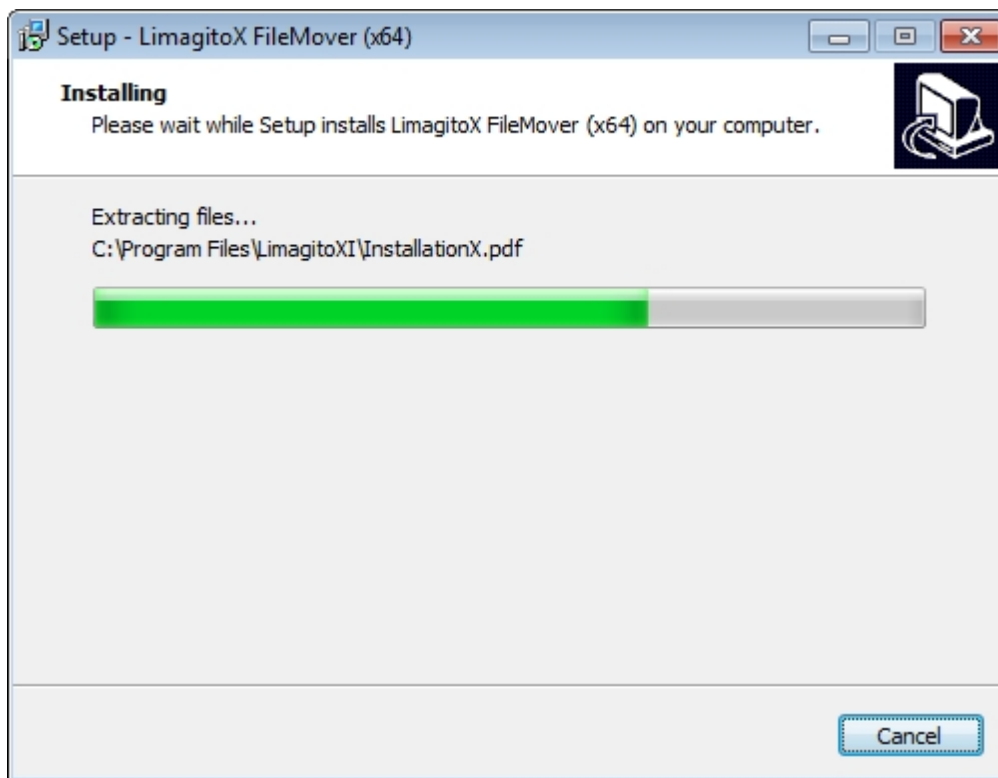
Now you can select if the installer needs to create a desktop icon an/or a shortcut in the quick launch toolbar.



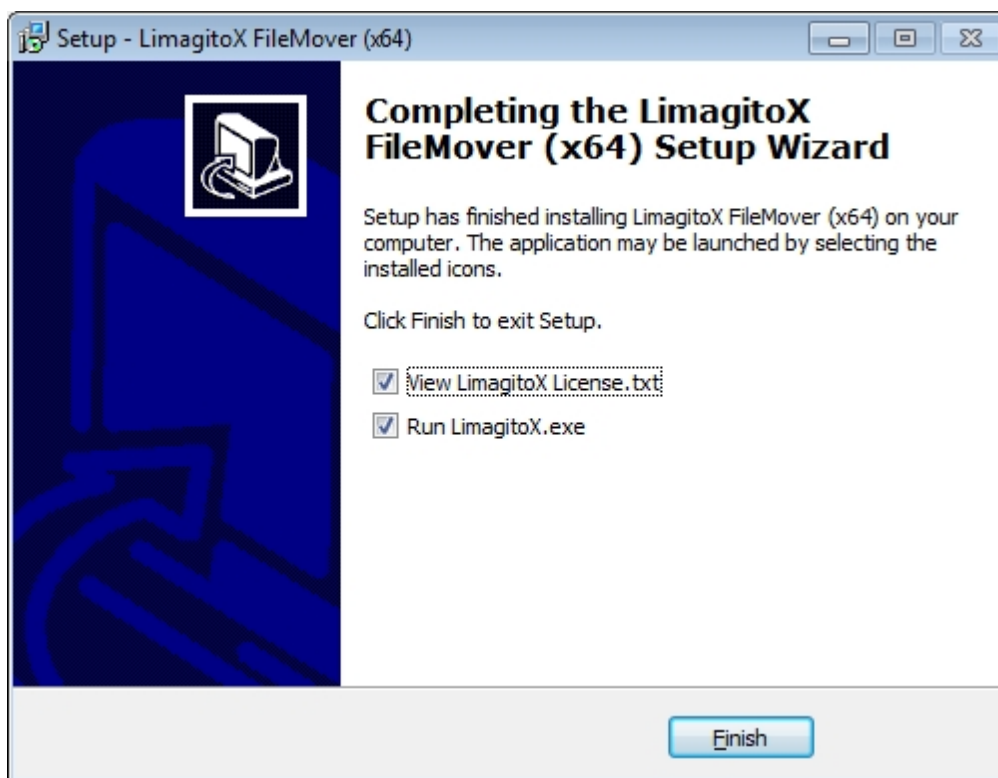
The ready to install screen. Click "Install" to continue.



Install in progress ..



The necessary license text and run LimagitoX.exe.



Done!

Regarding the License.txt file. Be sure to carefully read and understand all of the rights and restrictions set forth in our end-user license agreement ("EULA").

### **Privacy and refund policy**

Privacy Policy: Any personal information received will only be used to fill your order. We will not sell or redistribute your information to anyone.

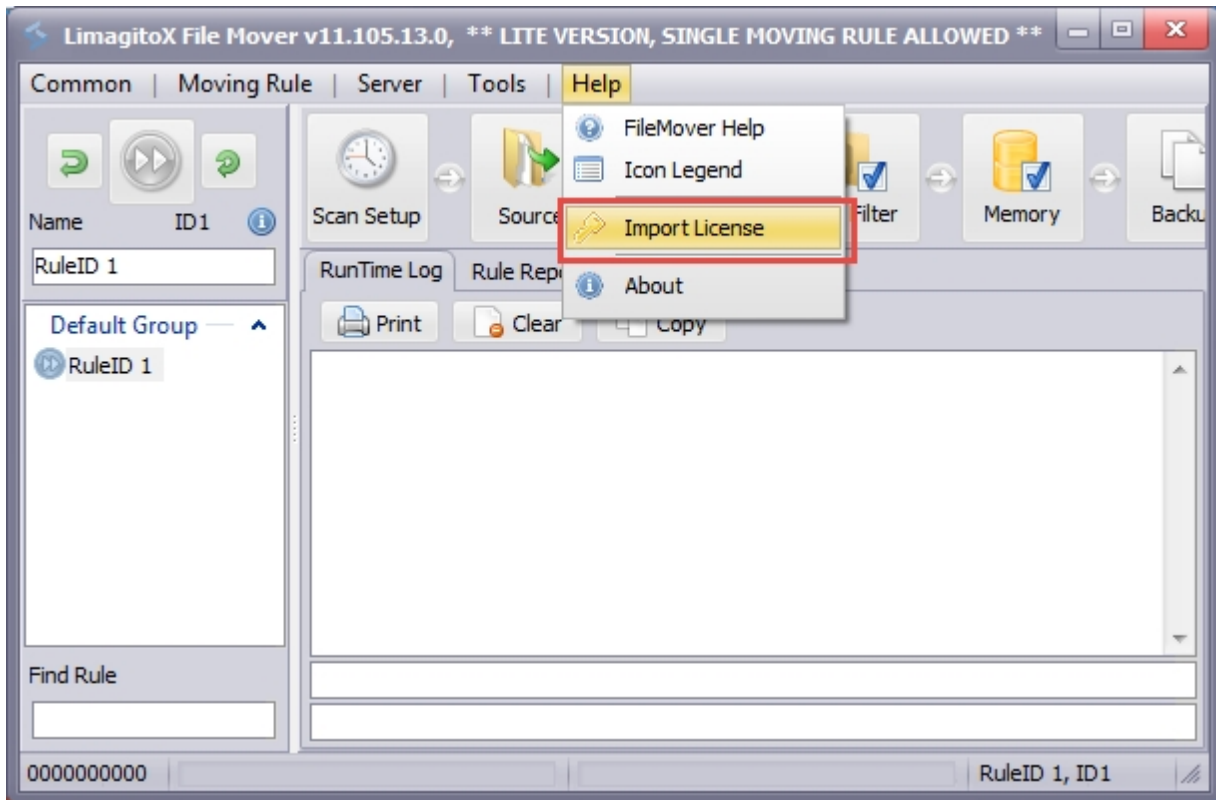
Refund Policy: We provide a free Lite version to let you fully evaluate our product(s) before purchasing. Unlike physical goods, electronically distributed software and software licenses can be duplicated. Once a license has been issued, it is unfortunately not possible for us to recall all copies. Therefore, Limagito.com does not accept product returns or exchanges. It is your responsibility to familiarize yourself with this refund policy. By placing an order, you are supposed to have read this refund policy, agreed with and fully accepted the terms of this refund policy. If you do not agree with or fully accept the terms of this refund policy, please do not purchase our product.

## License

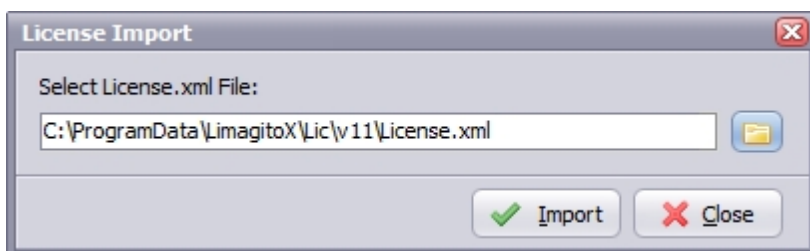
After payment you will receive a License.xml file (zipped) by mail. Please unzip and import the License.xml file into LimagitoX using the Import License option. After import and restart of our application you'll have features available (= Full version).

Run LimagitoX and select main menu item < Help >.

Select Help submenu item < Import License >.



Select your License.xml file and select < Import >.

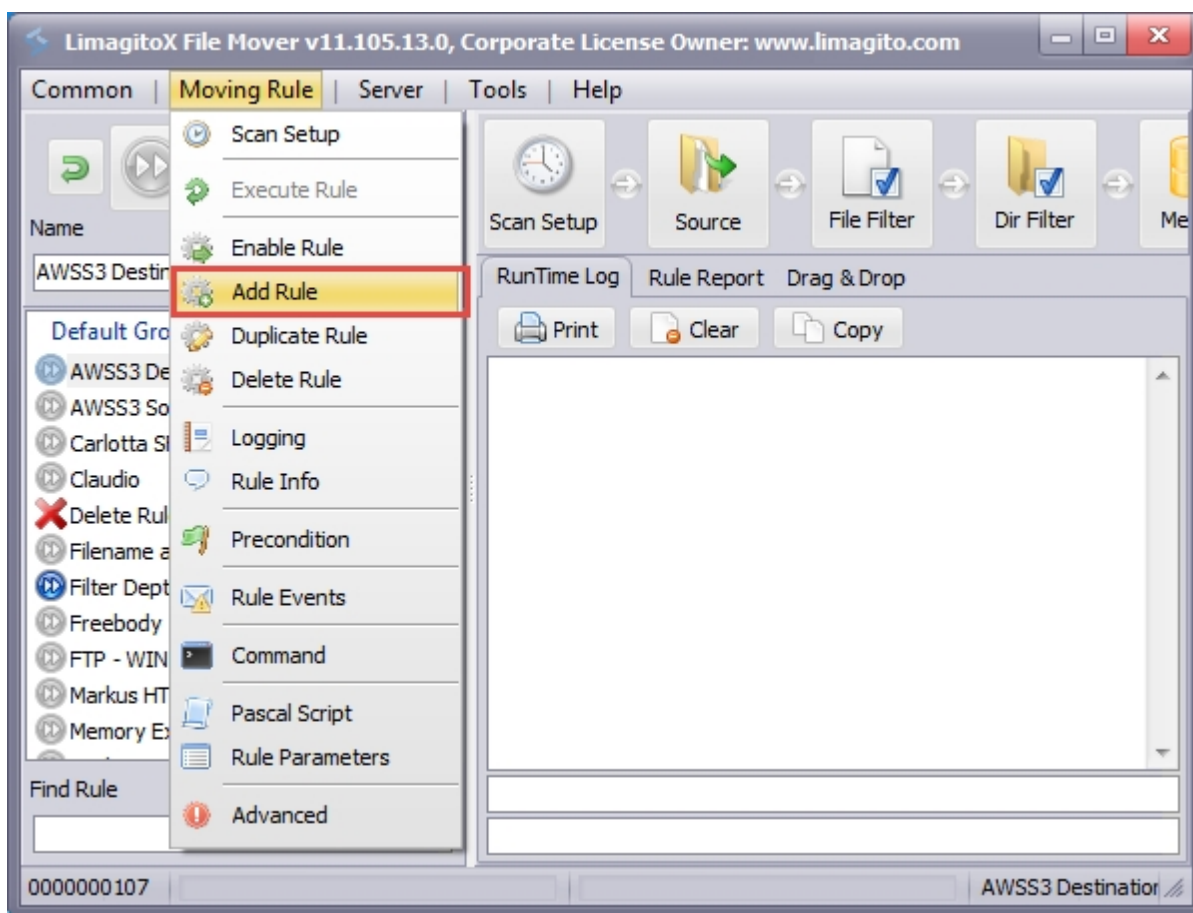


A Single User License key is generated for a specific hostname (= not transferable).. It's very important that you give use the correct hostname of the PC where LimagitoX is going to be installed. You can find the correct hostname in the < About > box of LimagitoX.





The default amount of moving rules of the full version is 1. You can add a rule using the < Add Rule > option in the < Moving Rule > menu. The maximum amount of rules is 1000. Our advice is to use a second instance of LimagitoX after +/- 500 rules (best practise - depends also on the hardware you're using).



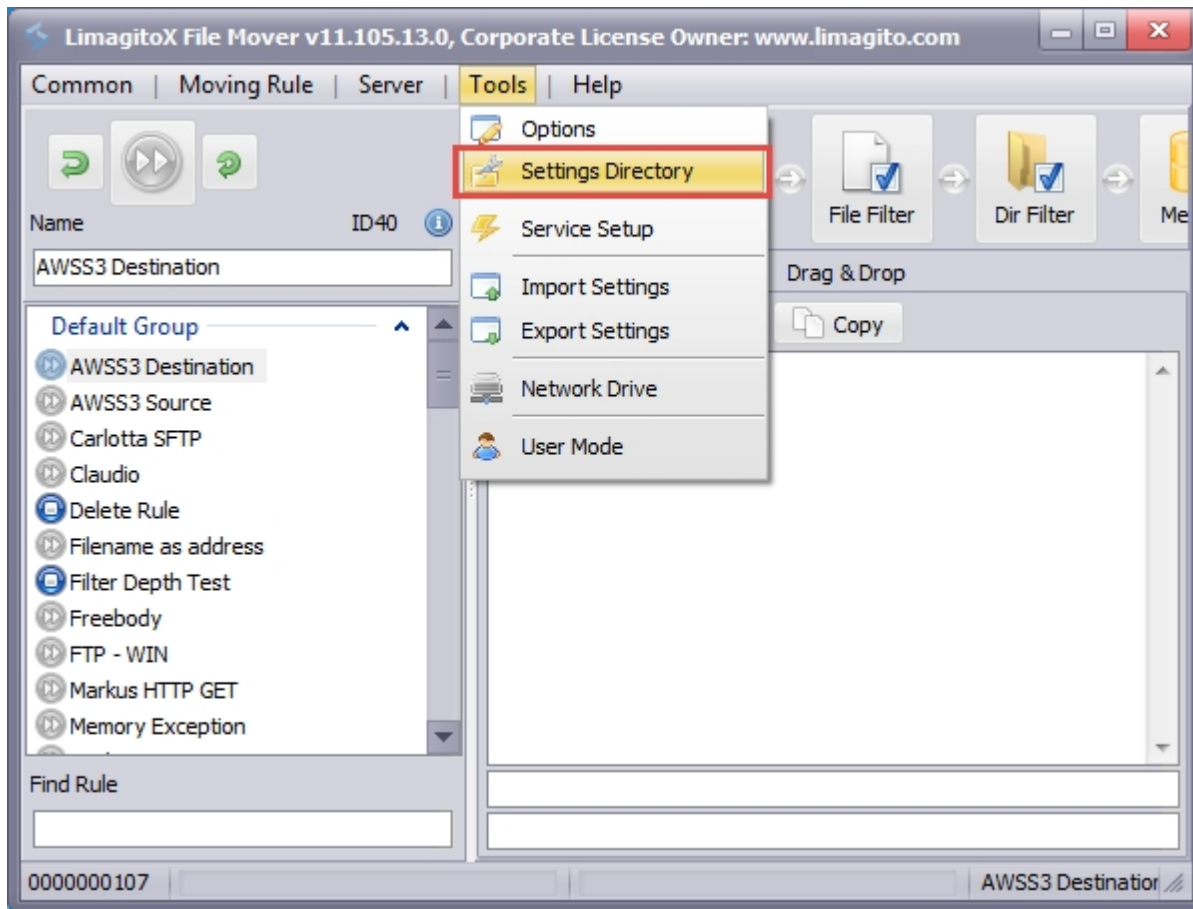
## +PLUS Option Pack

Open main menu item < Tools > and select submenu item < Options >.



## Settings

Use the < Settings Directory > option in the Tools menu to find where LimagitoX File Mover stores its settings. You can find all settings, except the Run @ Startup, in this directory. The Run @ Startup option is stored in the Windows registry. The settings directory depends on the OS you're using.



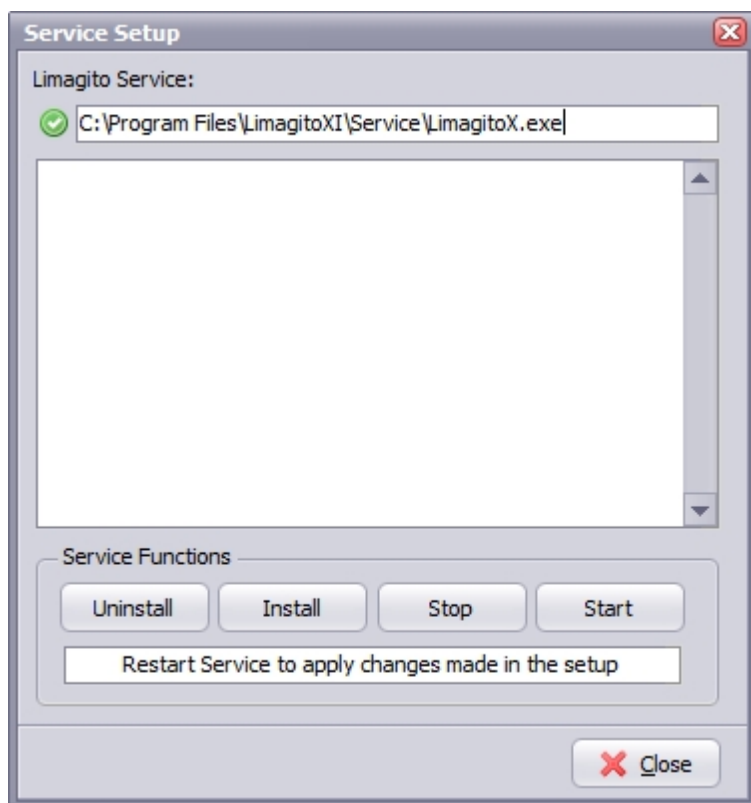
## Backup

Backup of LimagitoX File Mover settings is quite easy.

1. When LimagitoX service is running: stop LimagitoX service.
2. Stop LimagitoX.
3. Backup the complete settings directory.
4. Check if you have a copy of the License.xml file.
5. Start LimagitoX.
6. When LimagitoX service was running: start LimagitoX service.

In case of recovery:

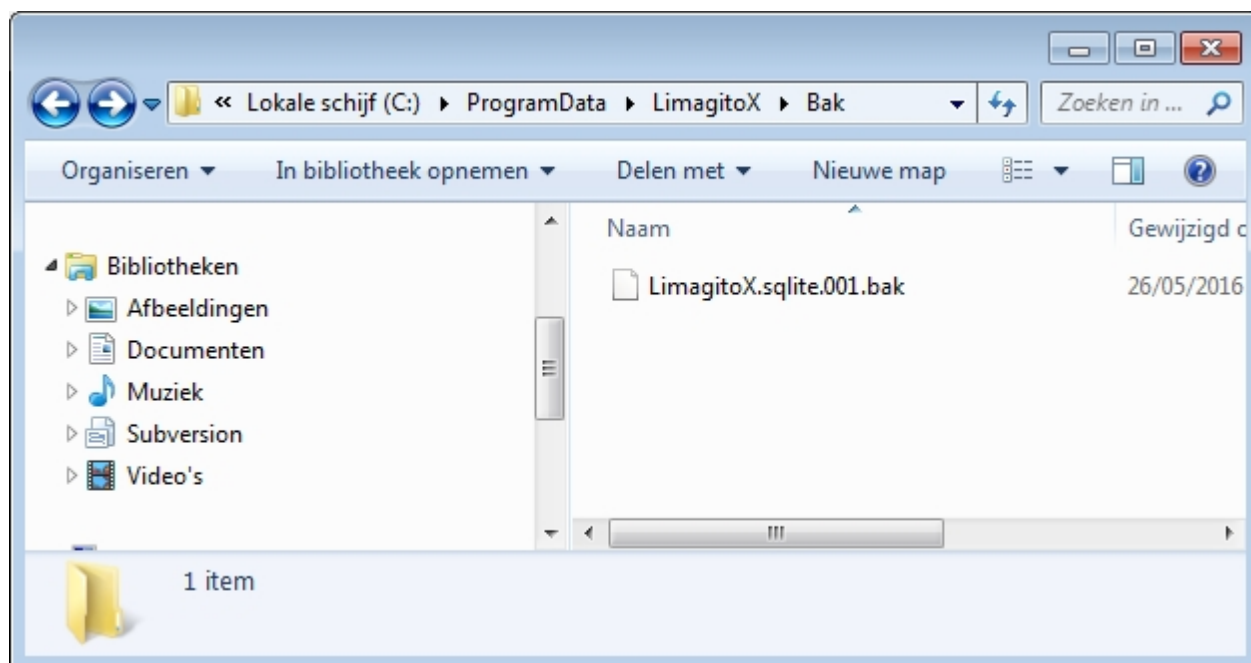
1. Install the latest LimagitoX setup.
2. Start LimagitoX and open the settings folder using the < Settings Directory > option in the Tools menu.
3. Stop LimagitoX.
4. Copy your backup settings files into the above LimagitoX settings directory.
5. Start LimagitoX.
6. When LimagitoX service is needed: install and start LimagitoX service.



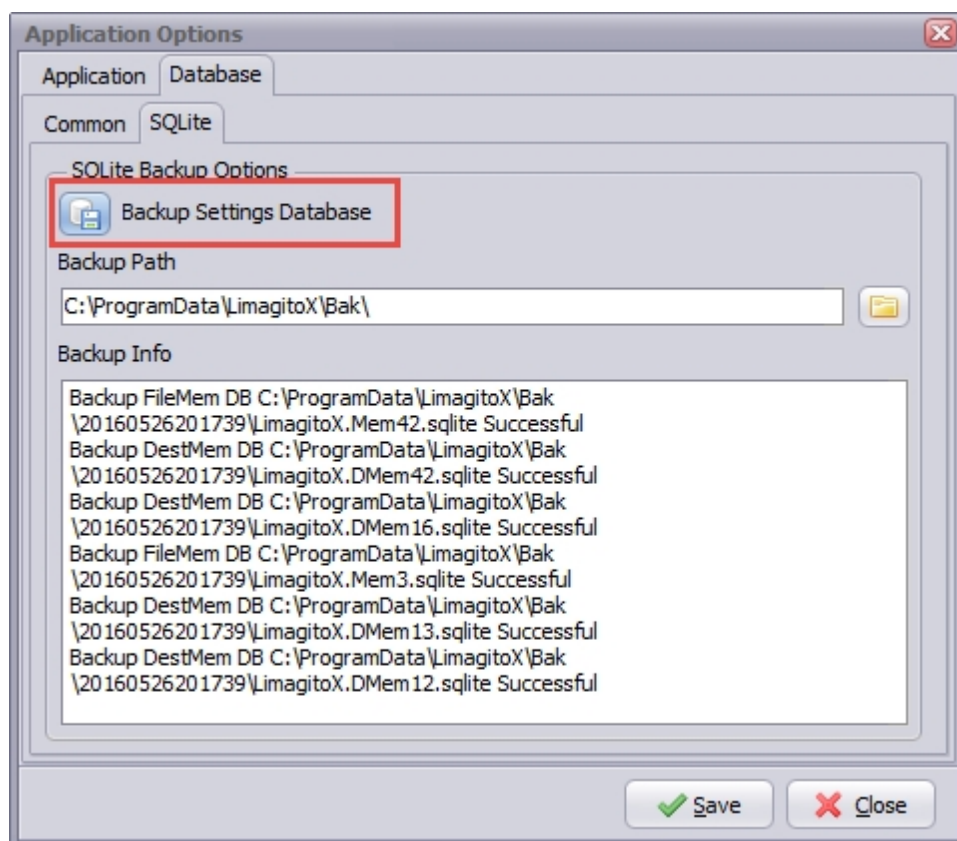
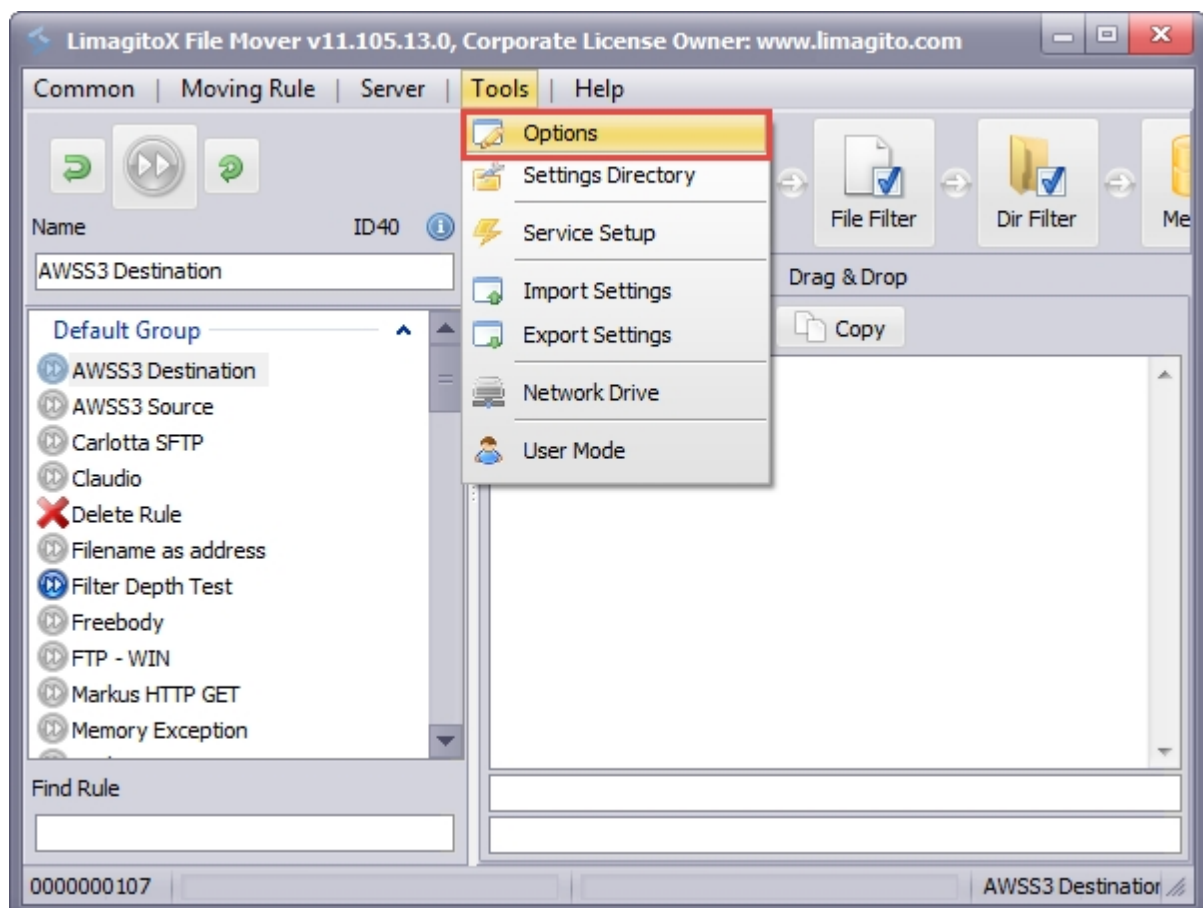
## Subdirectories

The Settings Directory contains the following subdirectories:

- < BAK > : Will contains up to 7 backups of "LimagitoX.sqlite". This is done automatically. Limagito.sqlite contains most settings of LimagitoX.exe (application and service version).



There's also a manual option to backup the settings database. Open main menu item < Tools > and select submenu item < Options >.



- < Log > : Default Log Directory of LimagitoX File Mover. The default prefix of a log file for the service version is 'Srv'.

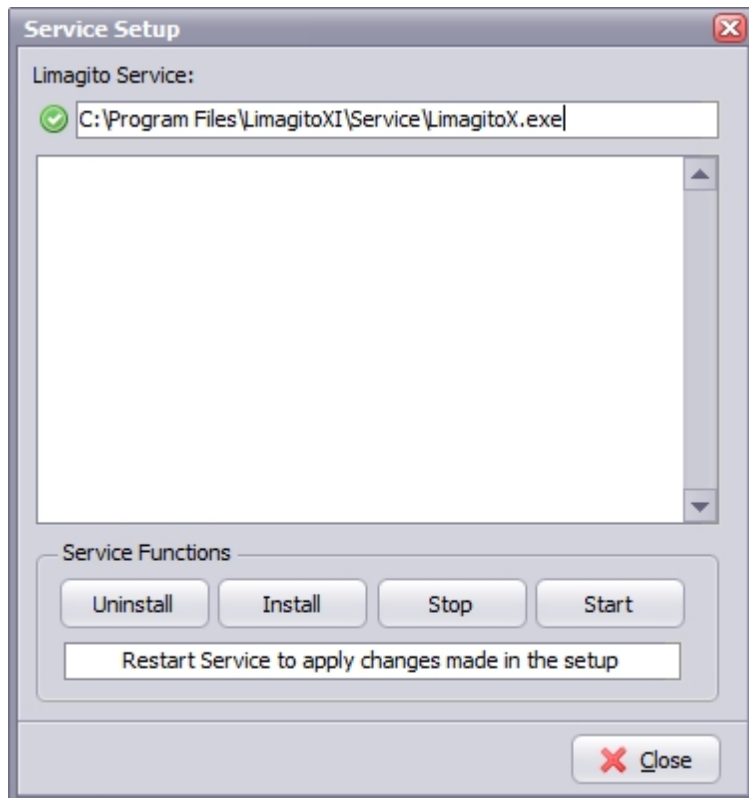


# Updates

---

LimagitoX File Mover updates:

1. When LimagitoX service is running: stop LimagitoX service.
2. Stop LimagitoX application.
3. Install the latest LimagitoX File Mover setup in the same install directory as the previous version. There is no need to uninstall the previous version.
4. Start LimagitoX Appmication.
5. When LimagitoX service was running: start LimagitoX service.



## File Types

---

LimagitoX File Mover file types:

▶ LimagitoX.exe	Application version of LimagitoX File Mover
▶ Service\LimagitoX.exe	Service version of LimagitoX File Mover
▶ LimagitoX.sqlite	Contains most settings of LimagitoX.exe (Application and Service version)
▶ License.xml	LimagitoX License file
▶ LimagitoX.log	LimagitoX log file
▶ Limagito License.txt	LimagitoX End-User License Agreement
▶ OpenSSL License.txt	OpenSSL License Agreement
▶ LimagitoX.Mem1.sqlite	File memory database of Moving Rule with RuleId 1
▶ LimagitoX.DMem1.sqlite	Destination memory database of Moving Rule with RuleId 1
▶ libeay32.dll	OpenSSL dll file
▶ ssleay32.dll	OpenSSL dll file
▶ Help.chm	Help file in Microsoft compiled html format



# FAQ

---

After setup you'll find two versions of LimagitoX in it's install directory:

- ▶ An application version (= LimagitoX.exe)
- ▶ A service version (= Service\LimagitoX.exe)

Some important FAQ:

## 1) LimagitoX is used as application

- ▶ You can run the application version without the service version. The service version isn't needed when using our File Mover as an application.
- ▶ Settings will be saved in a SQLite database. You can find this database and all other configuration files under the 'Settings directory' menu item. A backup of this folder is all you need in case of recovery.

## 2) LimagitoX is used as a service

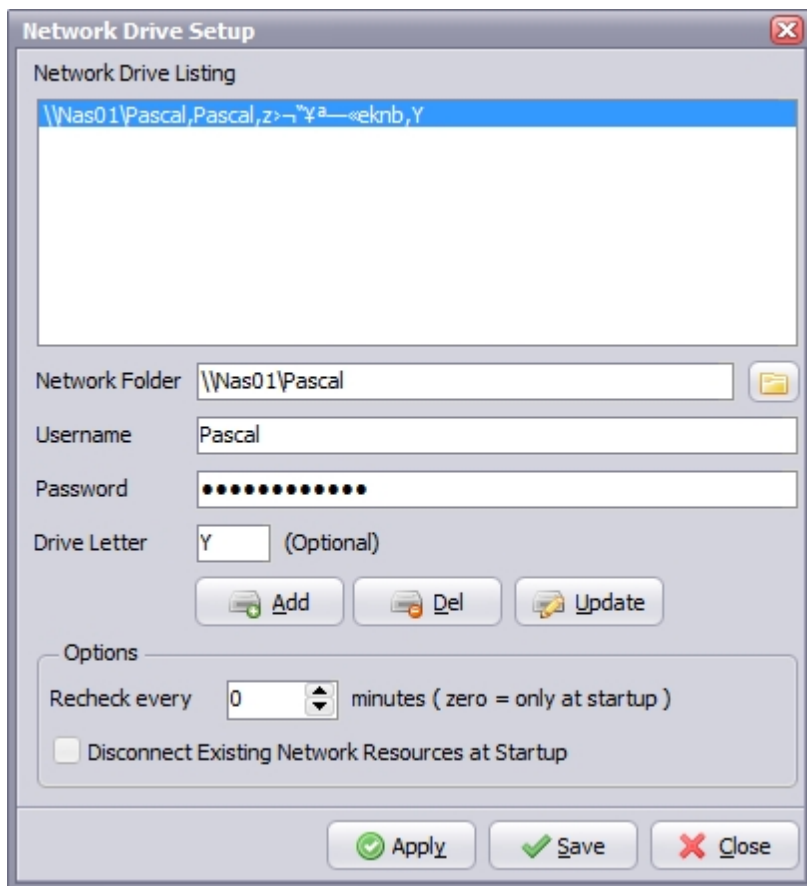
- ▶ You can run the service version without the application version.
- ▶ You only need the application version as a setup tool for the service.
- ▶ Install the service once (do not uninstall/install with every update).
- ▶ Use the service Setup tool within LimagitoX to control the service.
- ▶ You need to change the default logon as user of the service with a user that has sufficient rights (network, share, ...).
- ▶ You'll need to restart service every time you change something in the setup.
- ▶ The service version will share it's settings database with the application version.
- ▶ Please close the application version when you're done. It's not a good idea to let them both run.
- ▶ When you open the application version and the LimagitoX service is already running then it will set the status of all moving rules in the application version to 'Rule Enabled & Not Scanning'. We don't want the application version to interfere with the running LimagitoX service.
- ▶ If you want to know what the service is doing then please to enable the built-in HTTP server (Server Menu => HTTP Server). When the server is enabled you can connect to it's webpage (default <http://127.0.0.1:8080> ) and check the runtime log of the LimagitoX service.

## 3) Using a drive letter when using LimagitoX as a service

We often get the comment that the service isn't moving any files. After asking some more feedback about the issue we often get the following reply.

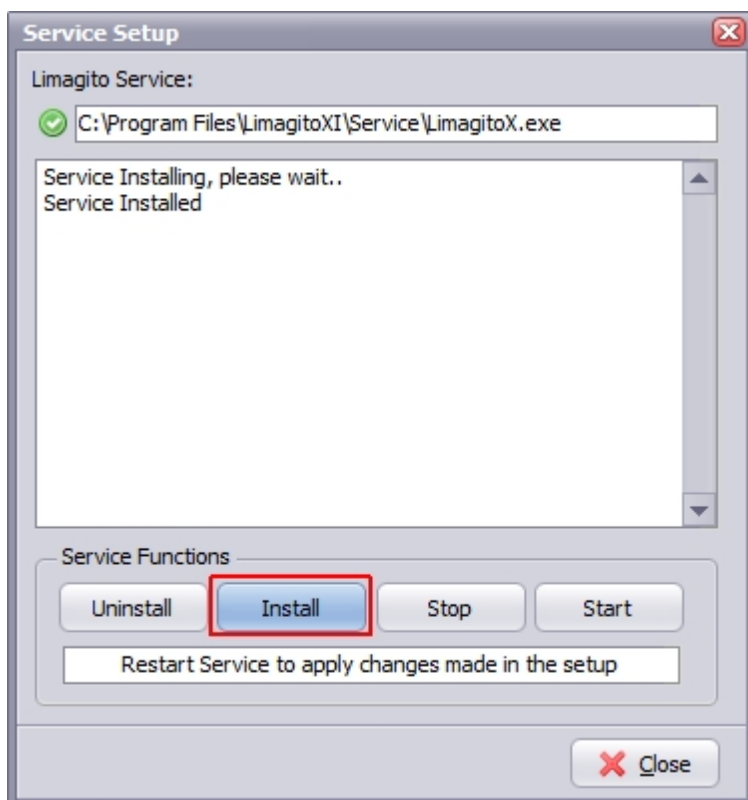
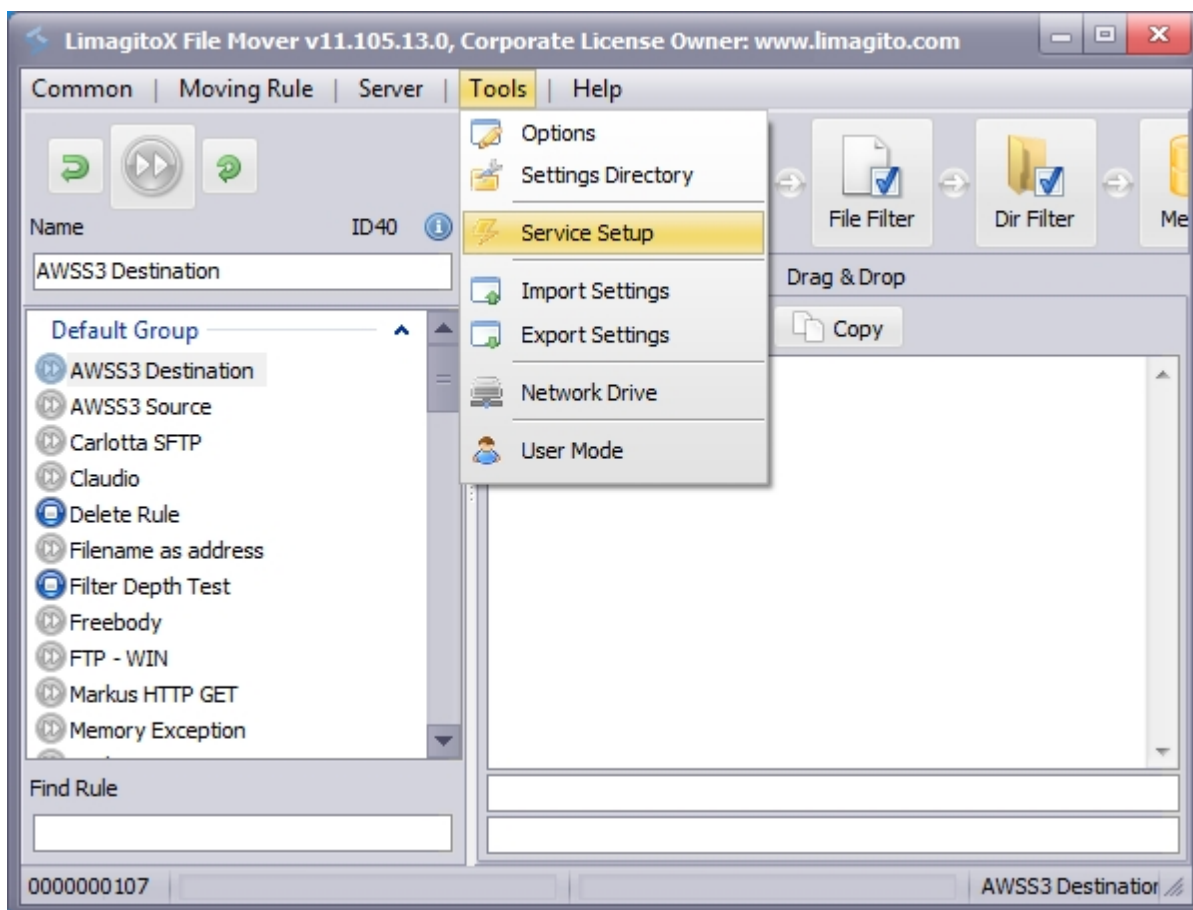
'I am attempting to move files from a mapped network drive to another mapped network drive. Both are mapped with a drive letter on my local machine. All works fine when using the LimagitoX application but not with the service.'

Yes and we know why it isn't working. Let us explain. The LimagitoX service does not know about the mapped drive letters that you are using as a logged on (desktop) user. Even when the logon as user for the LimagitoX service is the same as the one you are logged on with (they are both using a different session). If you want to use drive letters with the LimagitoX service then you need to add them using our Network Drive option (Tools menu => Network Drive). First unmap them in Windows then map them again using this option. The service will then also map the drive letters at startup in it's own session.

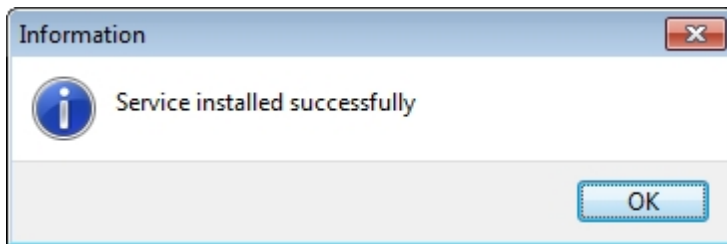
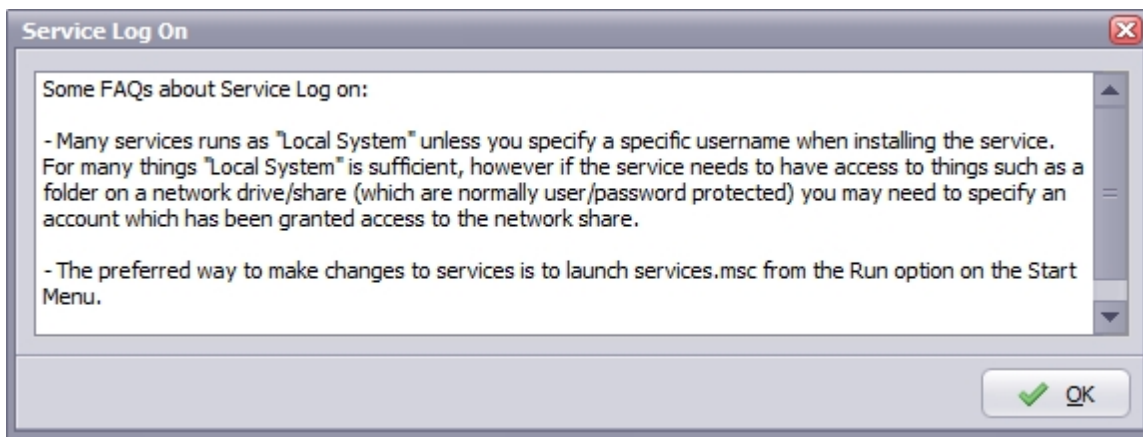


---

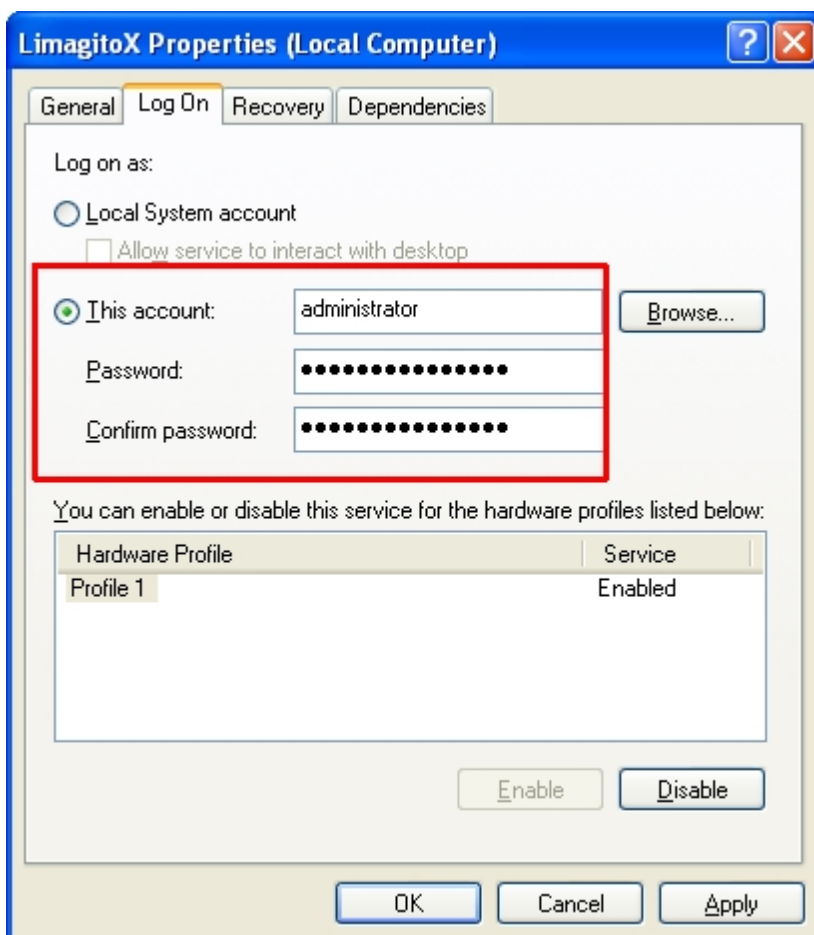
Install LimagitoX as a service using the < Install > button in the < Service Setup > screen.



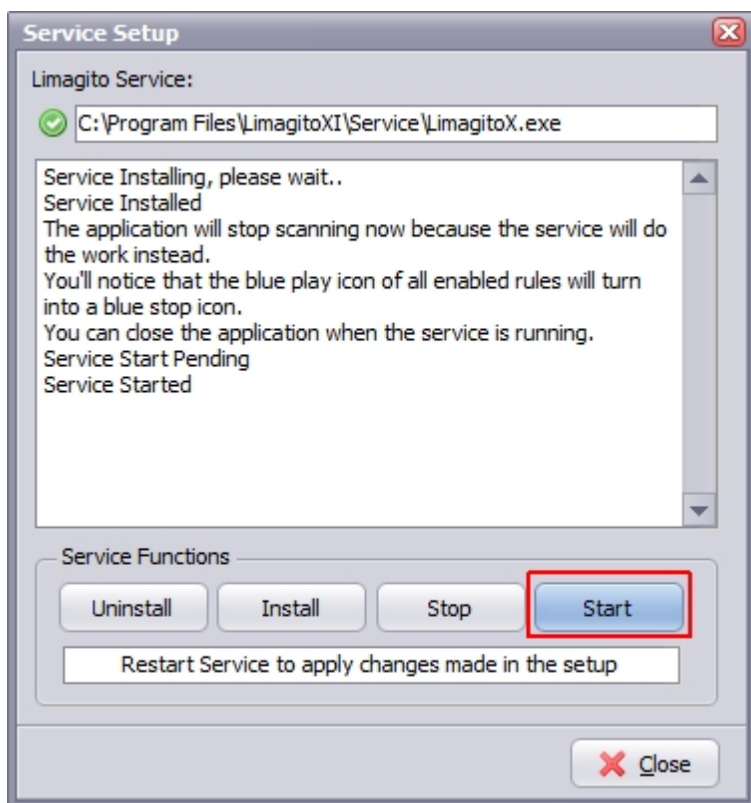
**"Please read the following information carefully"**



Adjust the "Log on as" account settings:



Start the LimagitoX service:



Exit the LimagitoX application. We don't want the application version to interfere with the running LimagitoX service.

---

## Revision History

---



Installation Guidelines v2016.05.26