

# **LimagitoX FileMover Installation Guidelines**

## Download

---

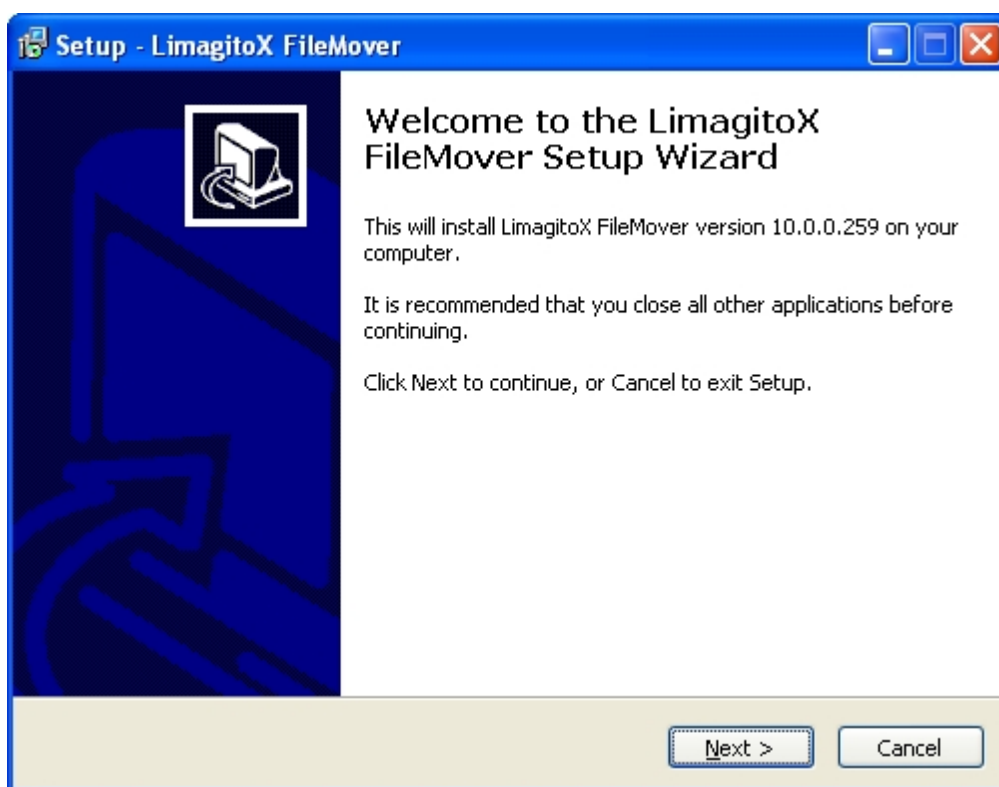
It's a good idea to download the latest version of LimagitoX before we start with the installation.

Download link:

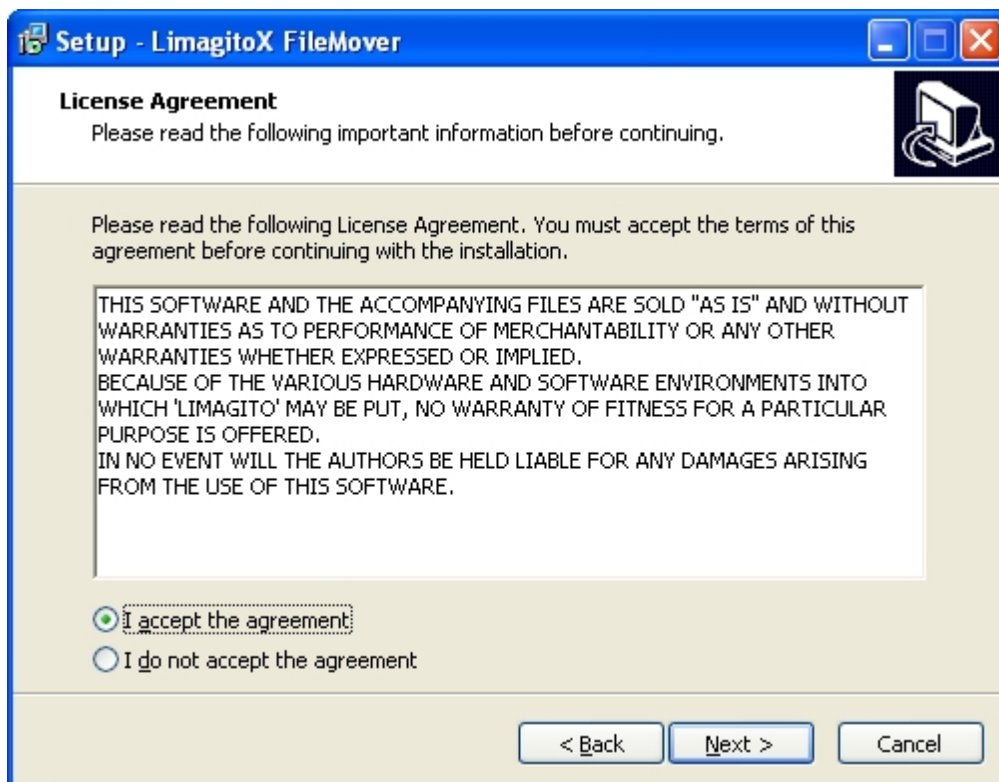
- Latest Snap Version      <http://www.limagito.com/files/setup.limagitox.snap.exe>
- Latest Lite Version      <http://www.limagito.com/files/setup.limagitox.lite.exe>

## Setup

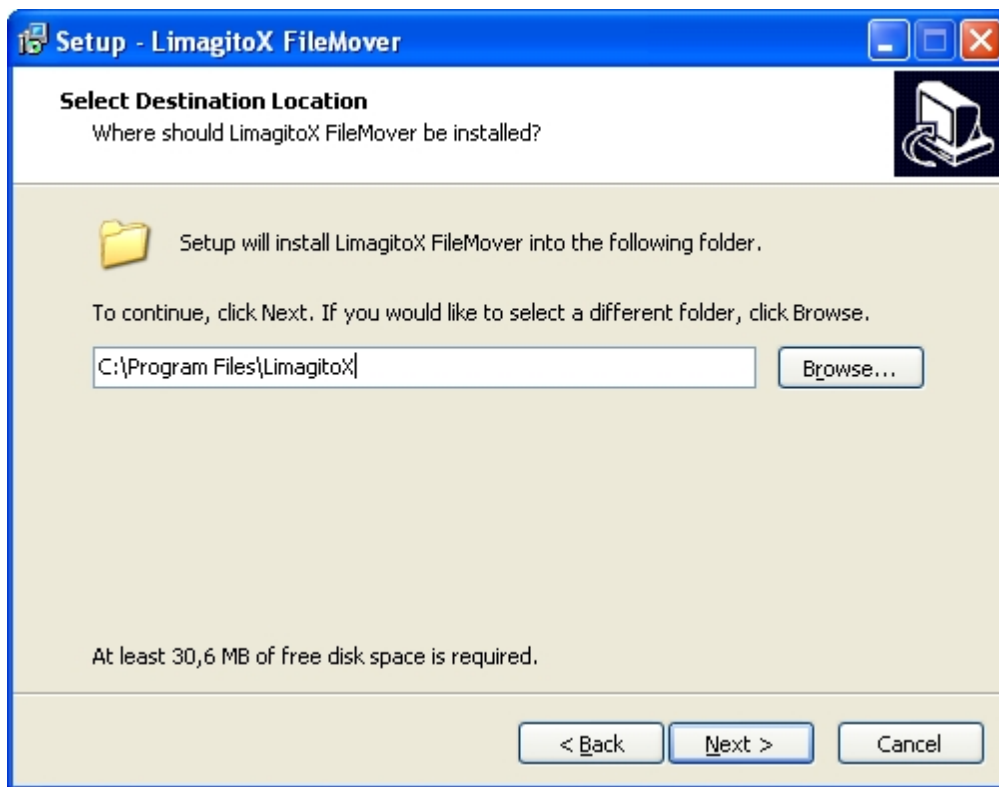
Execute the setup after download. In the first setup screen you'll see the version of our FileMover.



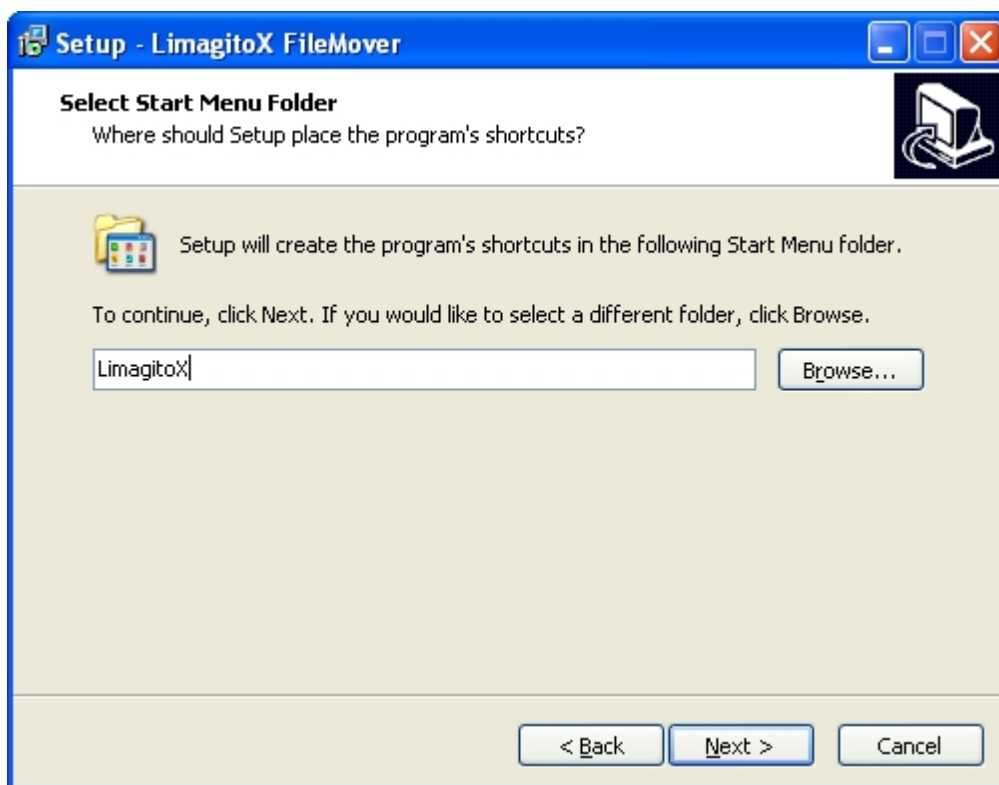
In the second screen you'll need to accept our license agreement, otherwise it isn't possible to continue with the installation.



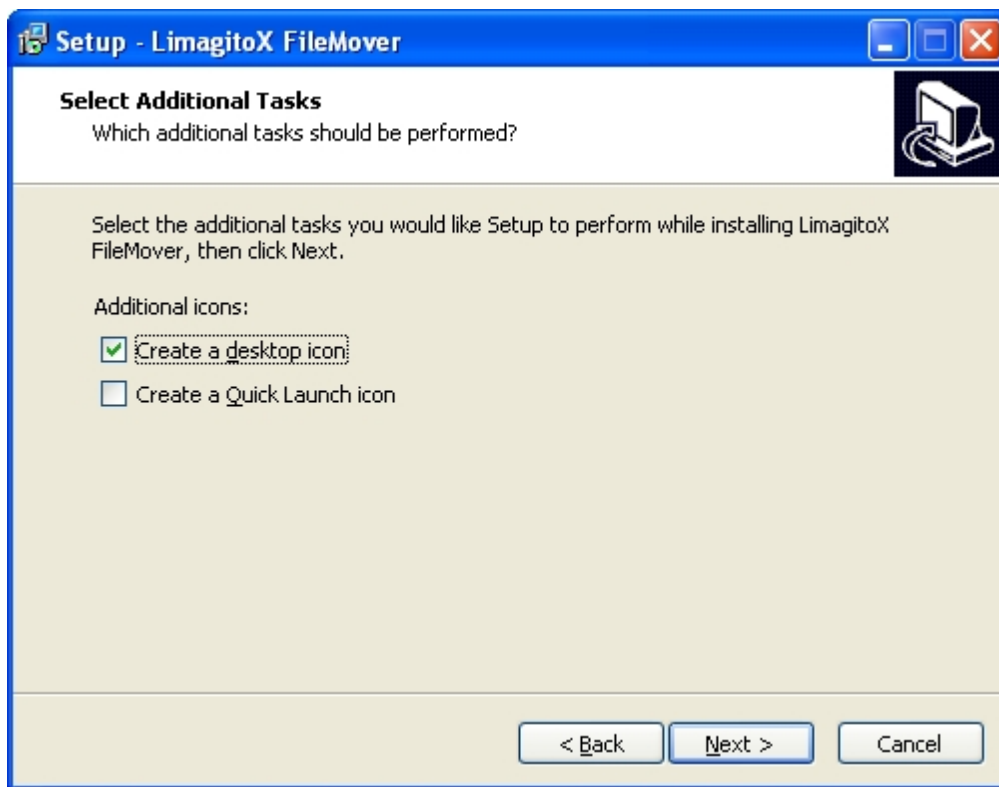
In the third screen you can choose the installation directory (default directory = 'Program Files').



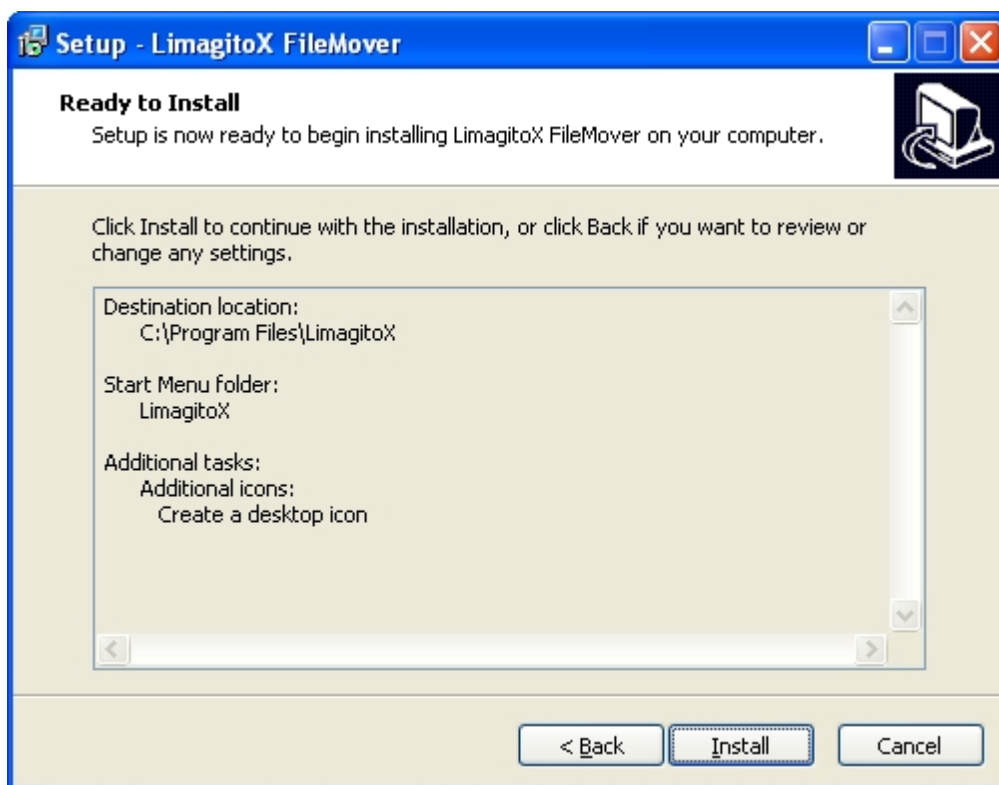
In the fourth screen you can choose the name of the start menu folder (default = LimagitoX)



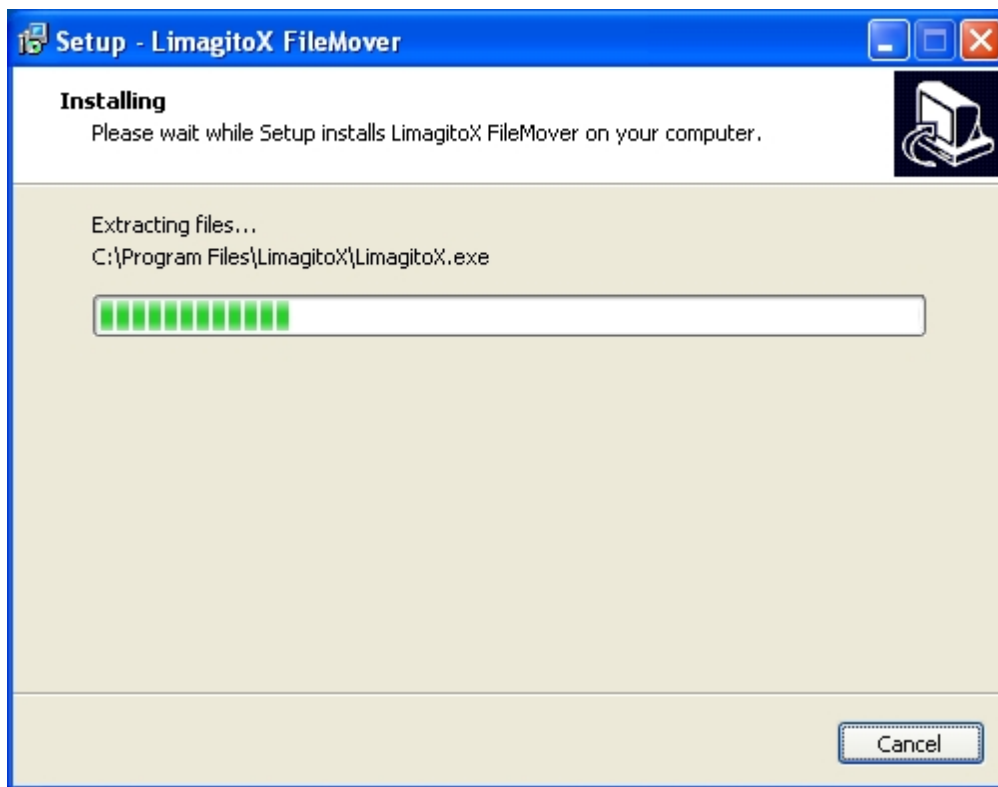
Now you can select if the installer needs to create a desktop icon an/or a shortcut in the quick launch toolbar.



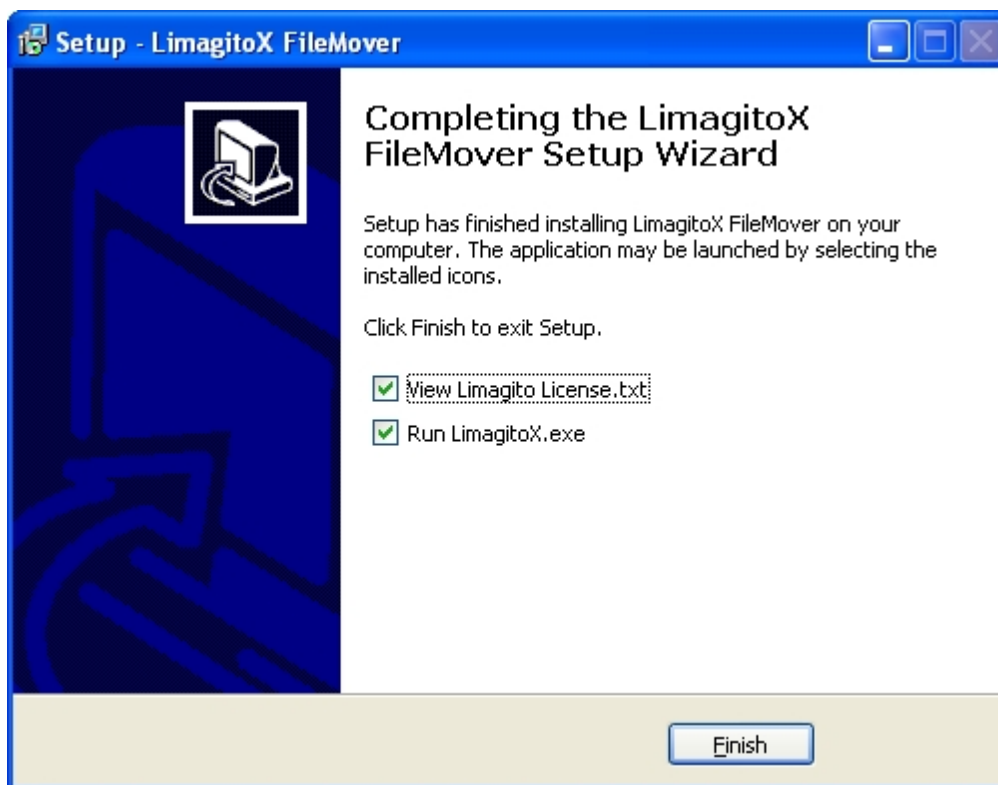
The ready to install screen. Click "Install" to continue.



Install in progress ..



The necessary license text and run LimagitoX.exe.

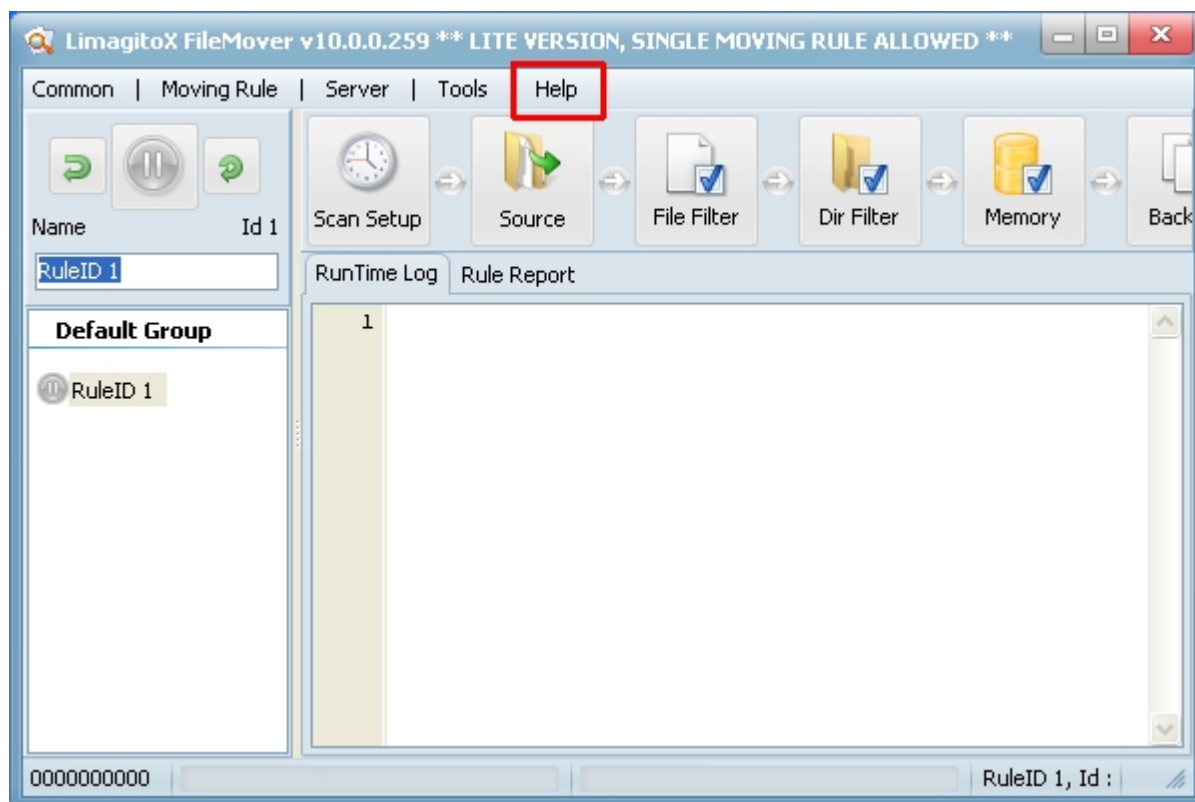


Done!

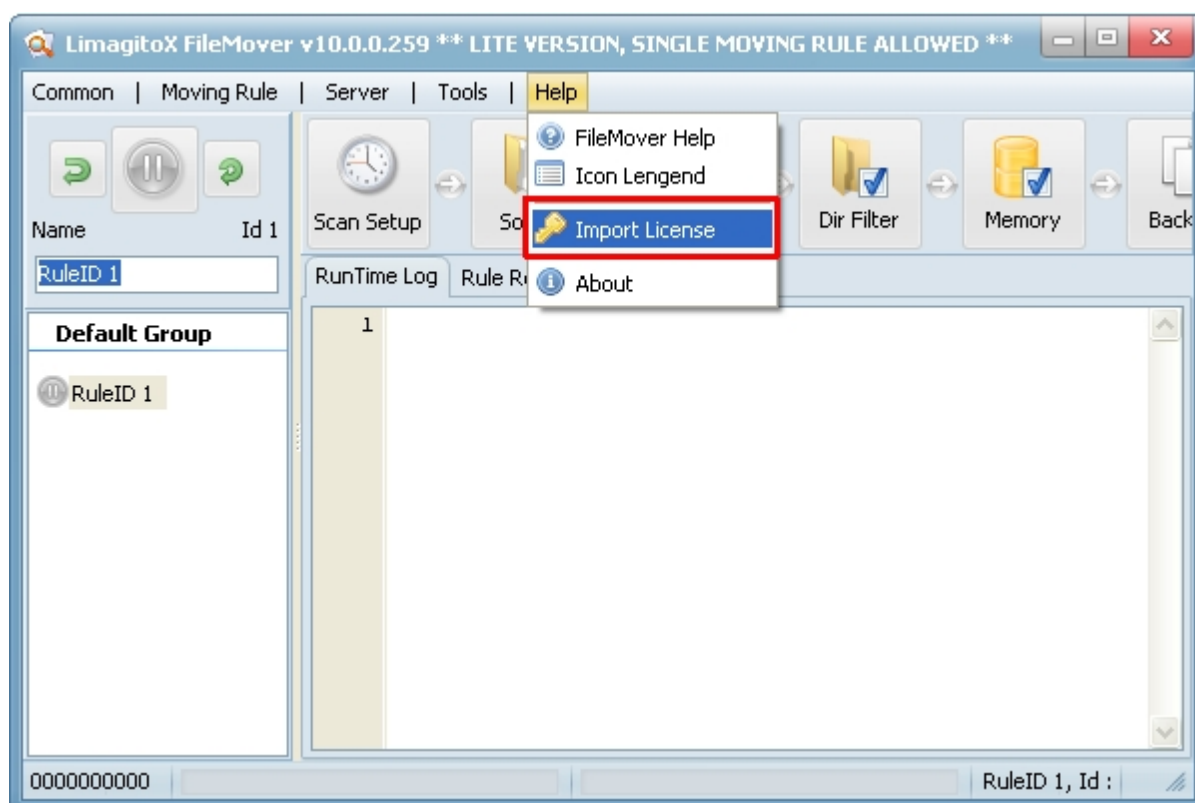
## License

After payment you will receive a License.xml file (zipped) by mail. Please unzip and import the License.xml file into LimagitoX using the Import License option. After import and restart of LimagitoX you'll have features available (= Full version).

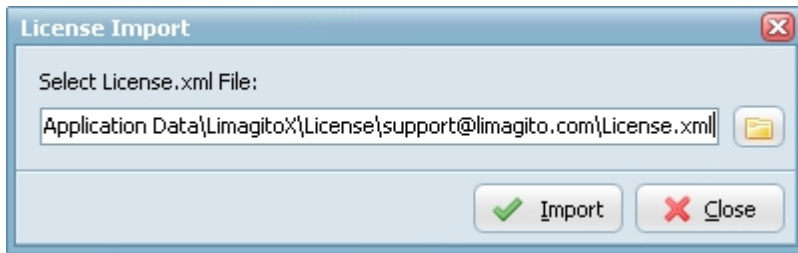
Run LimagitoX and select < Help >.



Select < Import License >.



Select your License.xml file and select < Import >.



Please restart LimagitoX.

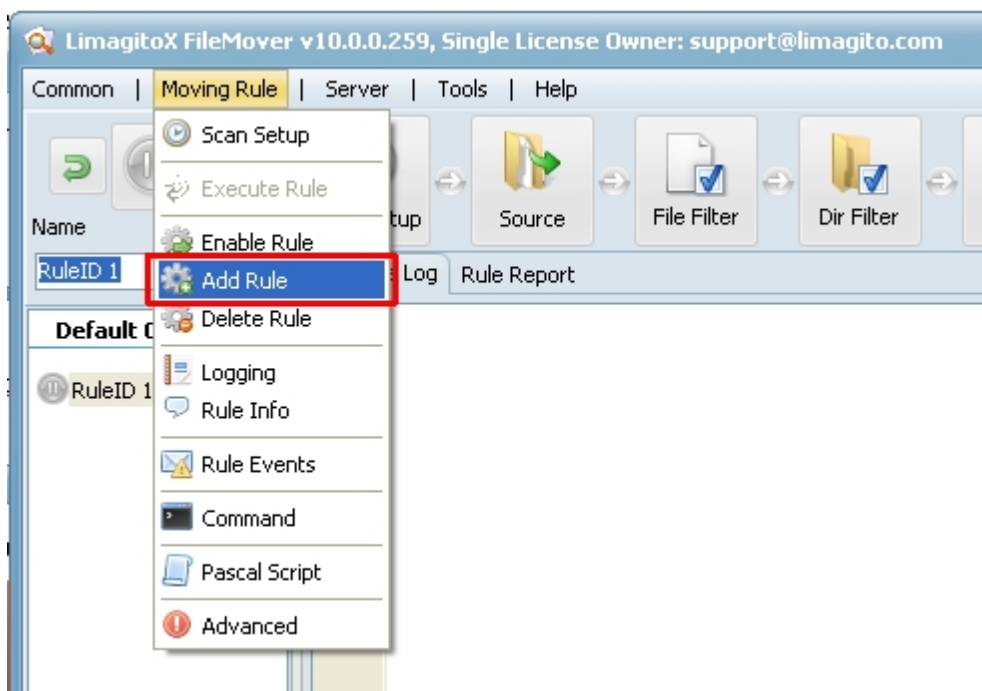


The Single License edition is Hostname specific. It's very important that you give use the correct hostname of the PC where LimagitoX is going to be installed. You can find the correct hostname in the < About > box of LimagitoX.



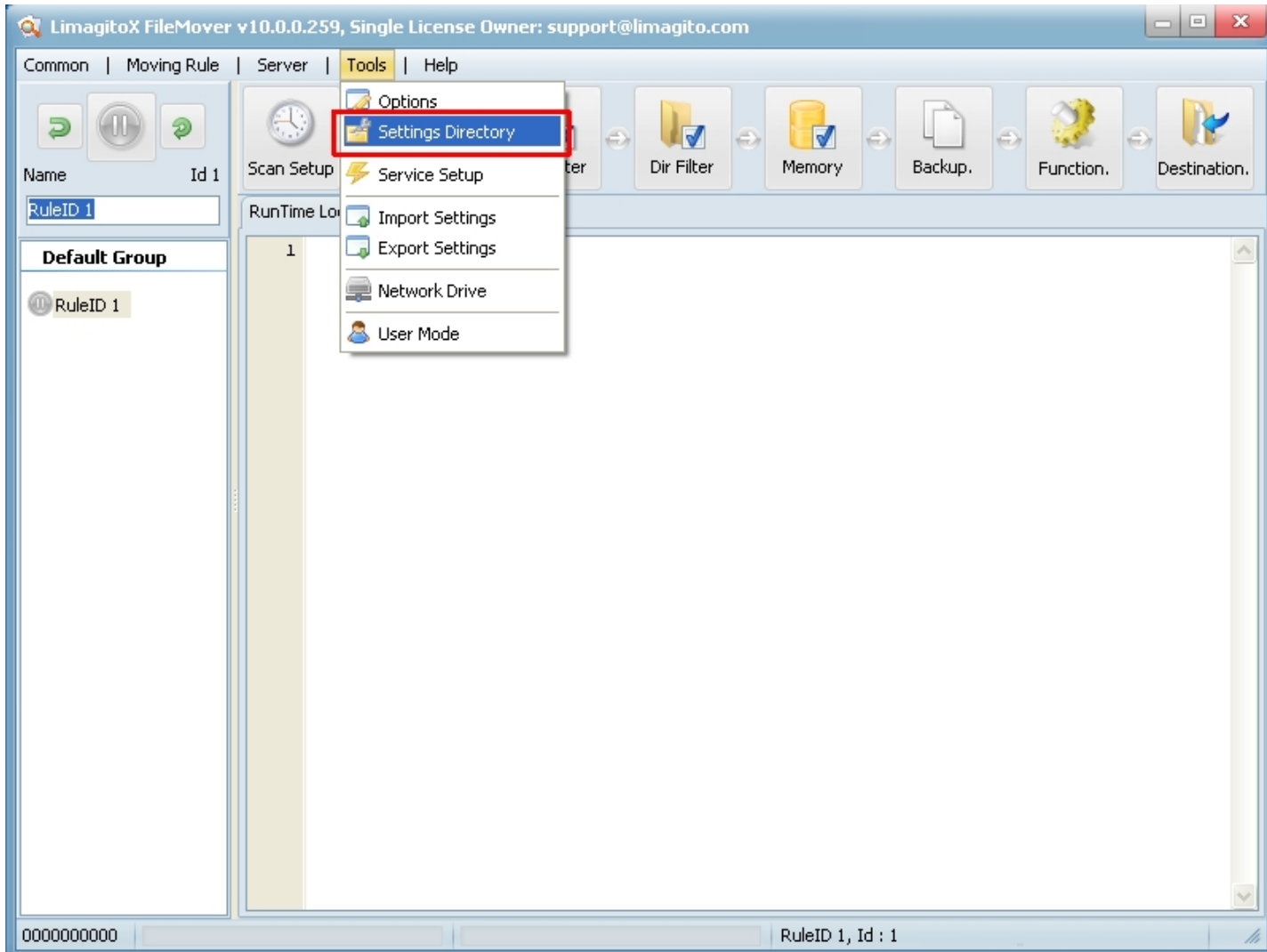
The default amount of moving rules of the full version is 1. You can add a rule using the < Add Rule > option in the < Moving Rule > menu. The maximum amount of rules is 1000. Our advice is to use a second instance of LimagitoX after +/- 500 rules (best practise - depends also on the hardware you're using).





## Settings

Use the < Settings Directory > option in the Tools menu to find where LimagitoX FileMover stores it's settings. You can find all settings, except the Run @ Startup, in this directory. The Run @ Startup option is stored in the Windows registry. The settings directory depends on the OS you're using.



## Backup

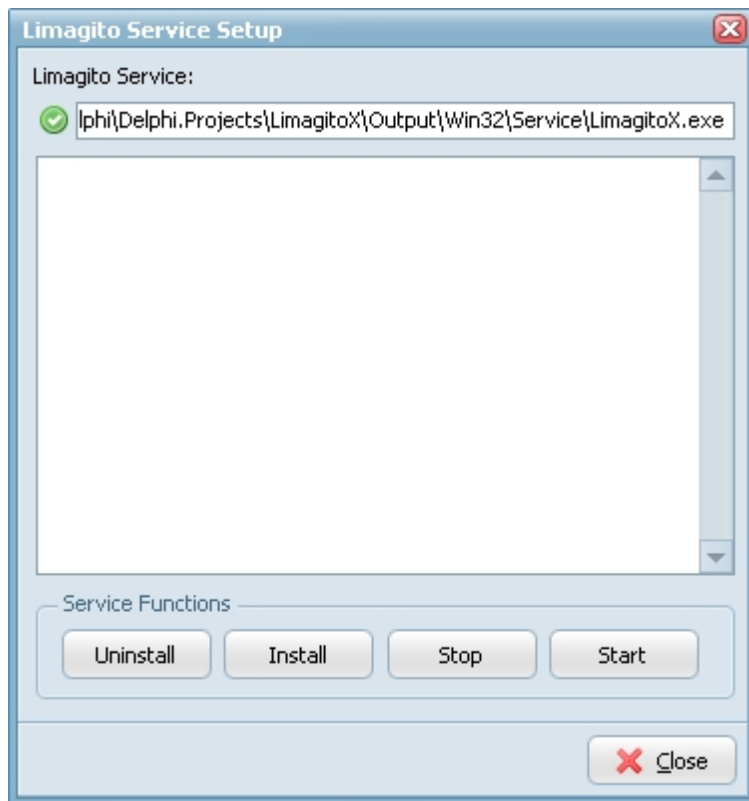
Backup of LimagitoX FileMover settings is quite easy.

1. When LimagitoX Service is running: stop LimagitoX Service.
2. Stop LimagitoX.
3. Backup the complete settings directory.
4. Check if you have a copy of the License.xml file.
5. Start LimagitoX.
6. When Service was running: start LimagitoX Service.

In case of recovery:

1. Install the latest LimagitoX setup.
2. Start LimagitoX and open the settings folder using the < Settings Directory > option in the Tools menu.
3. Stop LimagitoX.
4. Copy your backup settings files into the above LimagitoX settings directory.
5. Start LimagitoX.

6. When Service is needed: install and start LimagitoX Service.



## Subdirectories

---

The Settings Directory contains the following subdirectories:

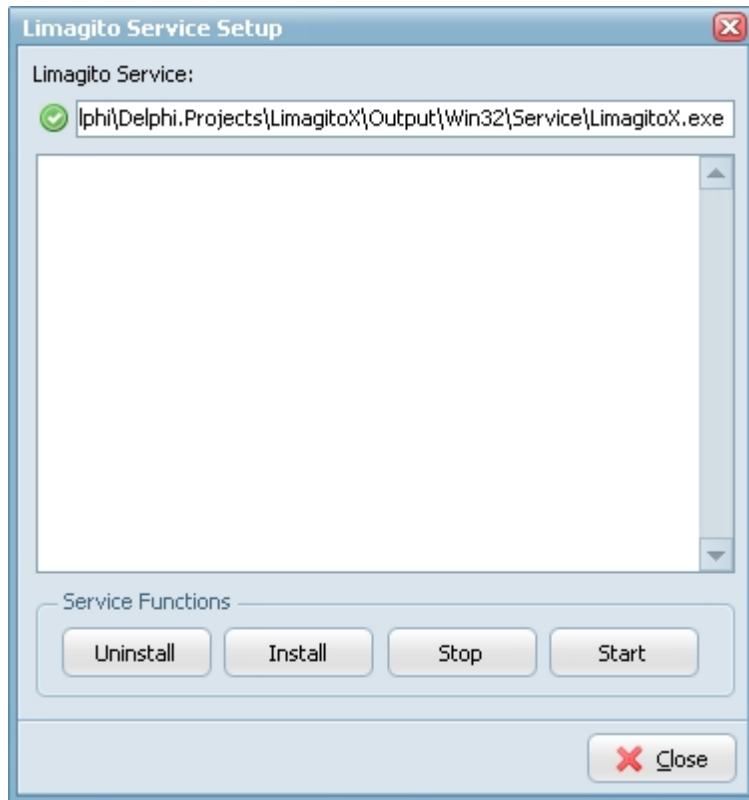
- < BAK > : Contains 7 backups of "LimagitoX.sqlite". Limagito.sqlite contains most settings of LimagitoX.exe (Application and Service version).
- < Log > : Default Log Directory of LimagitoX File Mover.

# Updates

---

LimagitoX FileMover updates:

7. When LimagitoX Service is running: stop LimagitoX Service.
8. Stop LimagitoX.
9. Install the latest LimagitoX setup in the same install directory as the previous version.
10. Start LimagitoX.
11. When LimagitoX Service was running: start LimagitoX Service.



# File Types

---

LimagitoX FileMover file types:

▶ LimagitoX.exe	Application version of LimagitoX FileMover
▶ Service\LimagitoX.exe	Service version of LimagitoX FileMover
▶ LimagitoX.sqlite	Contains most settings of LimagitoX.exe (Application and Service version)
▶ License.xml	LimagitoX License file
▶ LimagitoX.log	LimagitoX log file
▶ Limagito License.txt	LimagitoX End-User License Agreement
▶ OpenSSL License.txt	OpenSSL License Agreement
▶ LimagitoX.Mem1.sqlite	File memory database of Moving Rule with RuleId 1
▶ LimagitoX.DMem1.sqlite	Destination memory database of Moving Rule with RuleId 1
▶ English.xml	Language xml file
▶ Deutsch.xml	Language xml file
▶ libeay32.dll	OpenSSL dll file
▶ ssleay32.dll	OpenSSL dll file
▶ Help.chm	Help file in Microsoft compiled html format

## FAQ

After setup you'll find two versions of LimagitoX in it's install directory. An application version (= LimagitoX.exe) and a service version (= Service\LimagitoX.exe).

Some important FAQ:

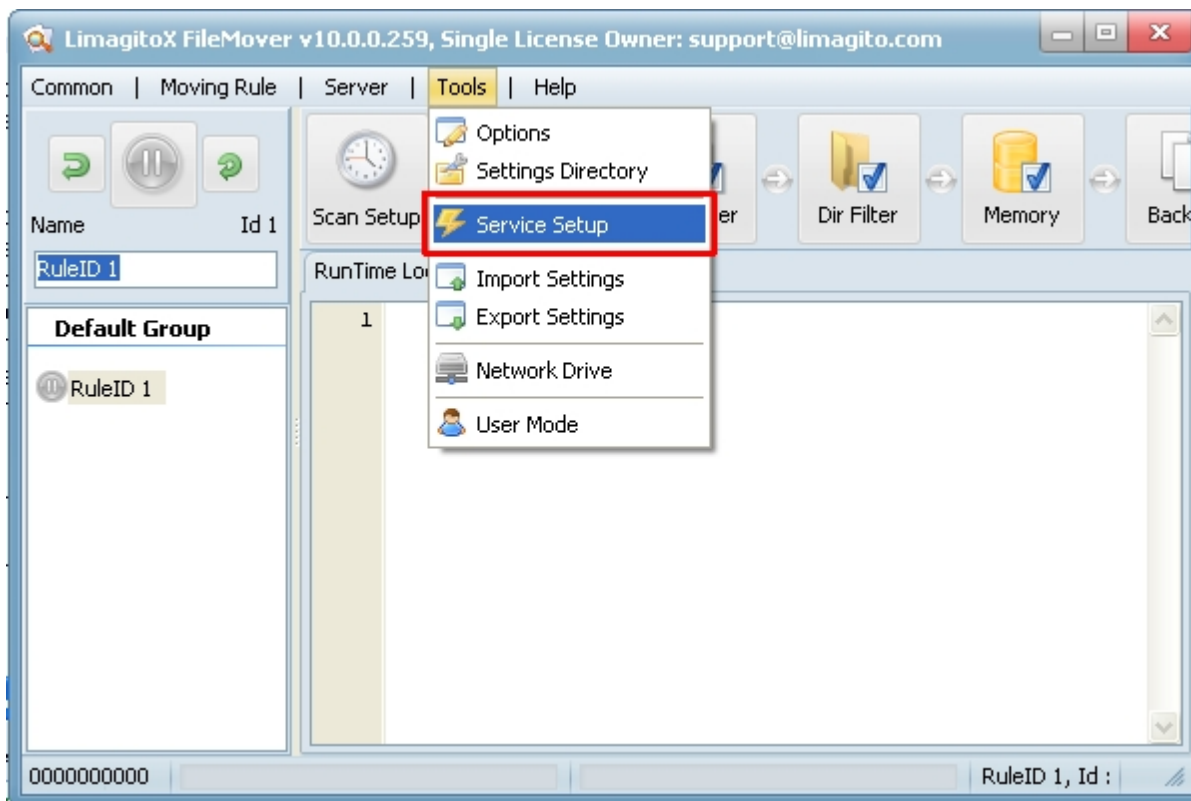
### 1) LimagitoX is used as application

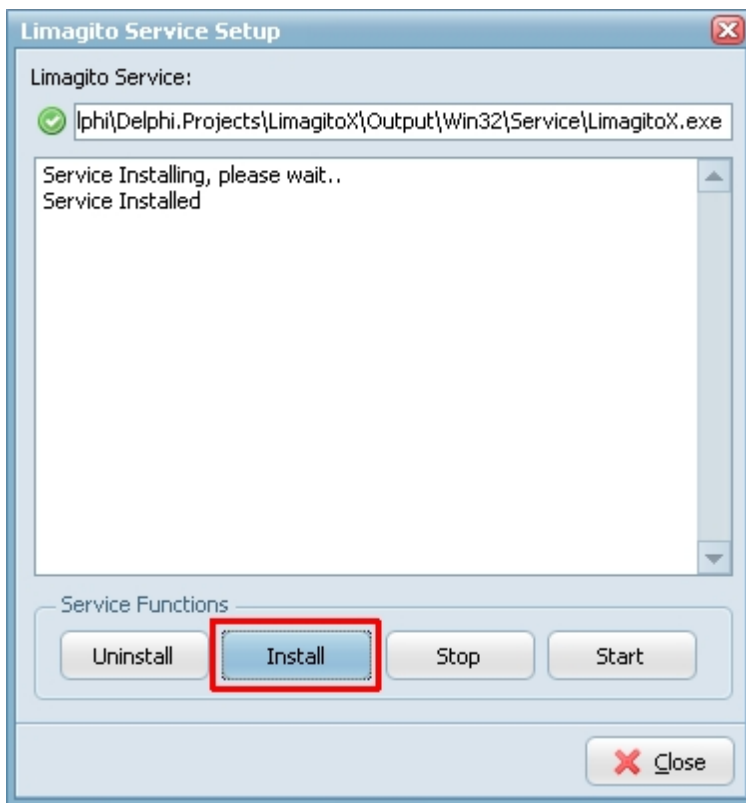
- ▶ You can run the application version without the service version. The service version isn't necessary.
- ▶ The application version will share it's settings with the service version.

### 2) LimagitoX is used as a service

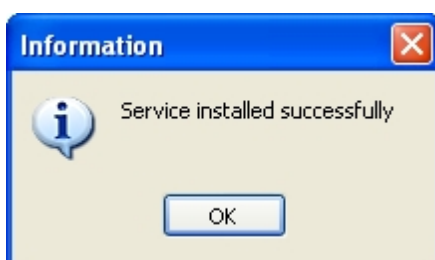
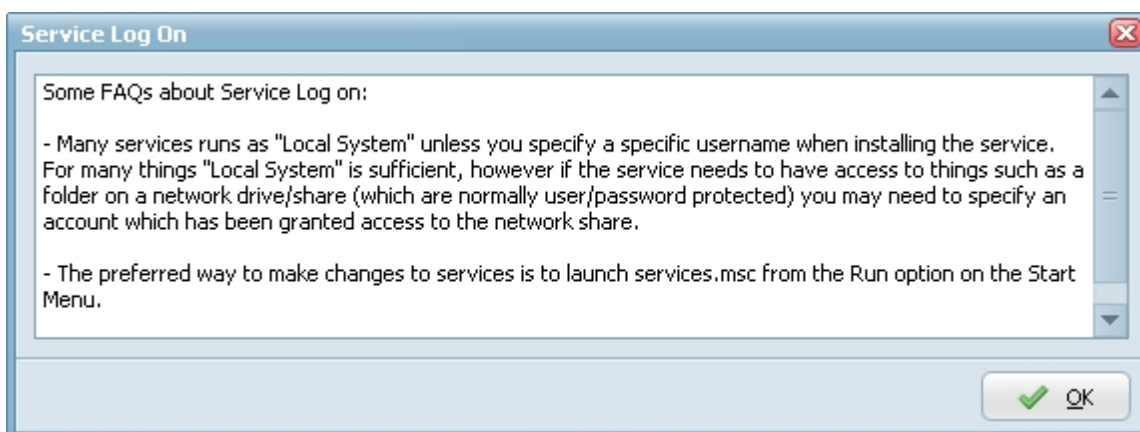
- ▶ You can run the service version without the application version.
- ▶ You'll only need the application version as a setup tool for the service.
- ▶ You'll need to restart service every time you change something in the setup.
- ▶ The service version will share it's settings with the application version.
- ▶ Please close the application version when you're done. It's not a good idea to let them both run.
- ▶ When you open the the application version and the LimagitoX service is already running then it will set the status of all moving rules in the application version to 'Rule Enabled & Not Scanning'. We don't want the application version to interfere with the running LimagitoX service.

Install LimagitoX as a service using the < Install > button in the < Service Setup > screen.

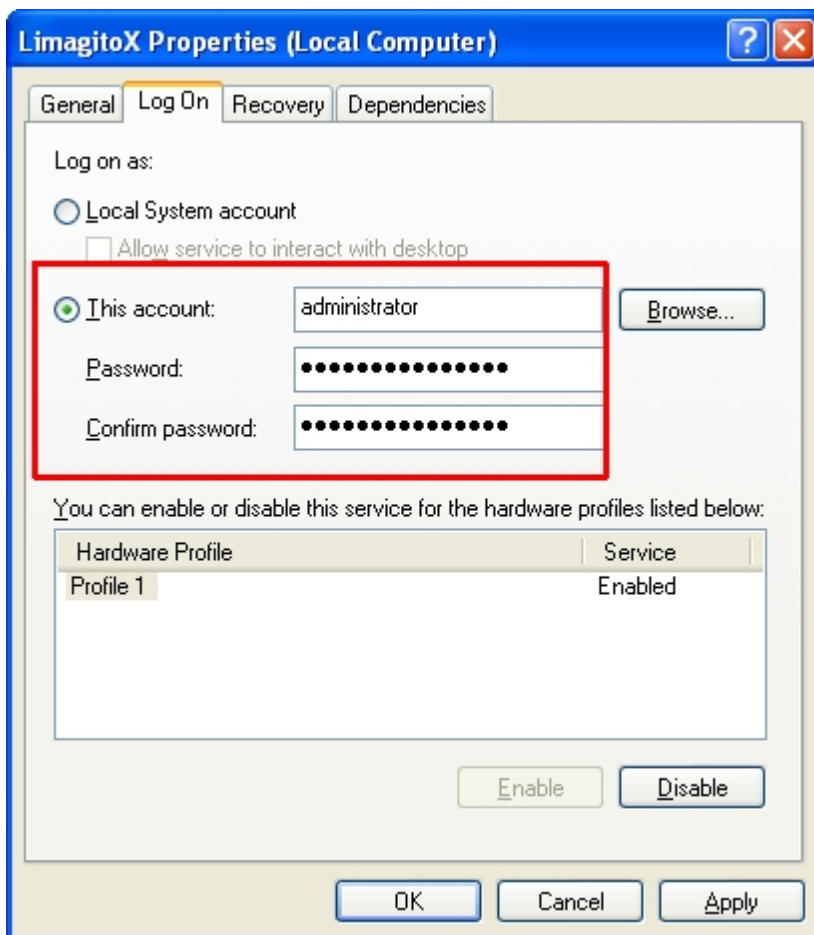




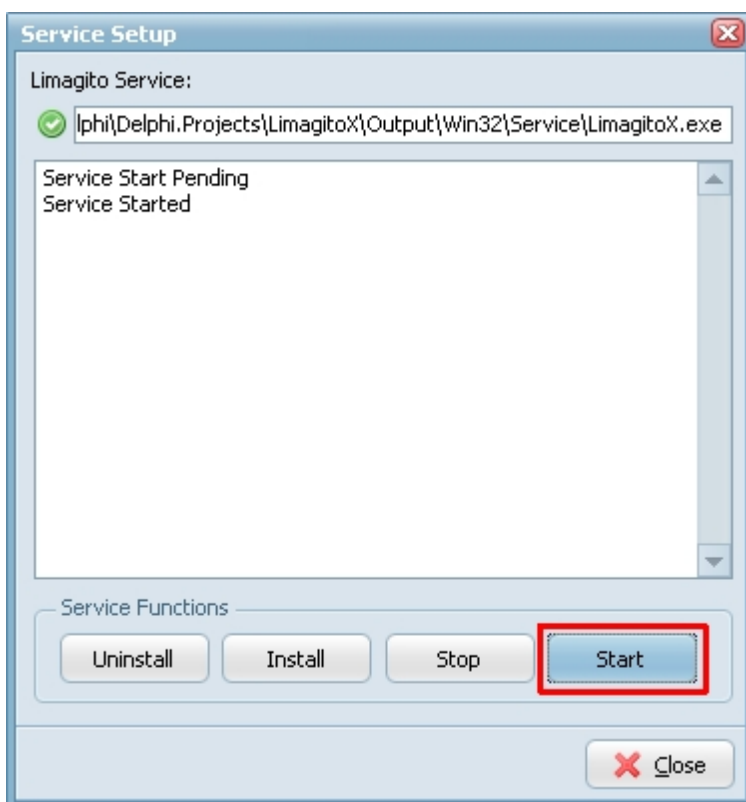
**"Please read the following information carefully"**



Adjust the "Log on as" account settings:



Start the LimagitoX service:



Exit the LimagitoX application. We don't want the application version to interfere with the running LimagitoX service.



## Revision History

---



Installation Guidelines v2013.01.01 (draft)



Installation Guidelines v2013.04.15 (update)