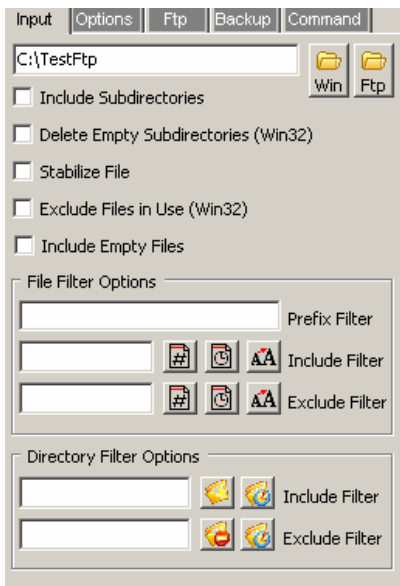


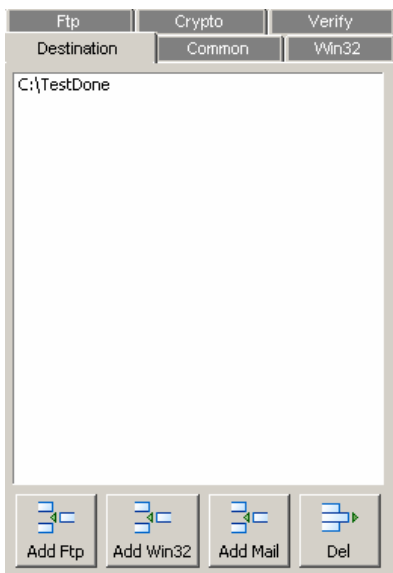
These are comments I have on the documentation, as well as some of the things that I was confused about as a first time user. I'm starting to understand the application better after just a couple hours of use.

#1 What is obvious now, was not totally obvious when I was trying to set a rule up for the first time. In your flash tutorial you make this very clear, the LEFT side is the INPUT Section (things you want to move/copy)... and the RIGHT side is the DESTINATION section (where you want to send things).

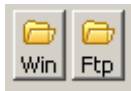
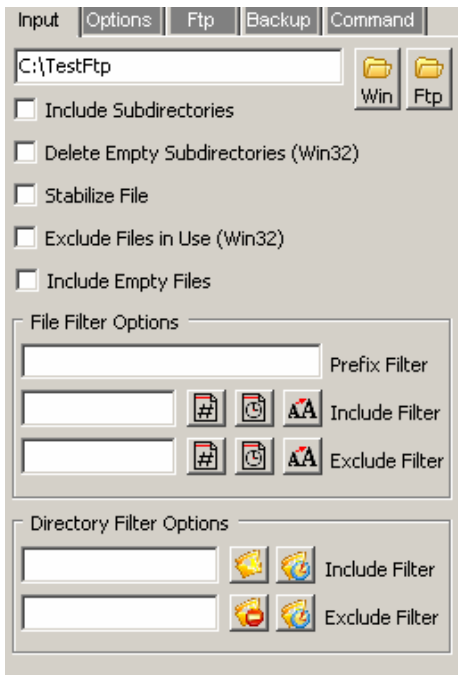
INPUT TABS (things you want to move/copy)



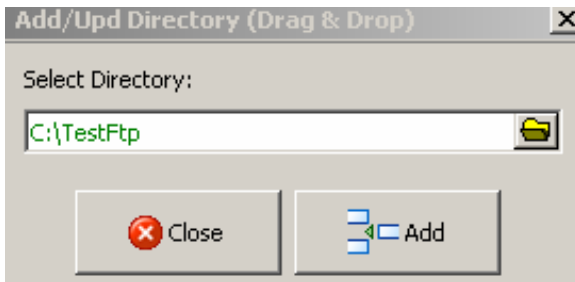
DESTINATION TABS (output tabs, where you want things to end up)



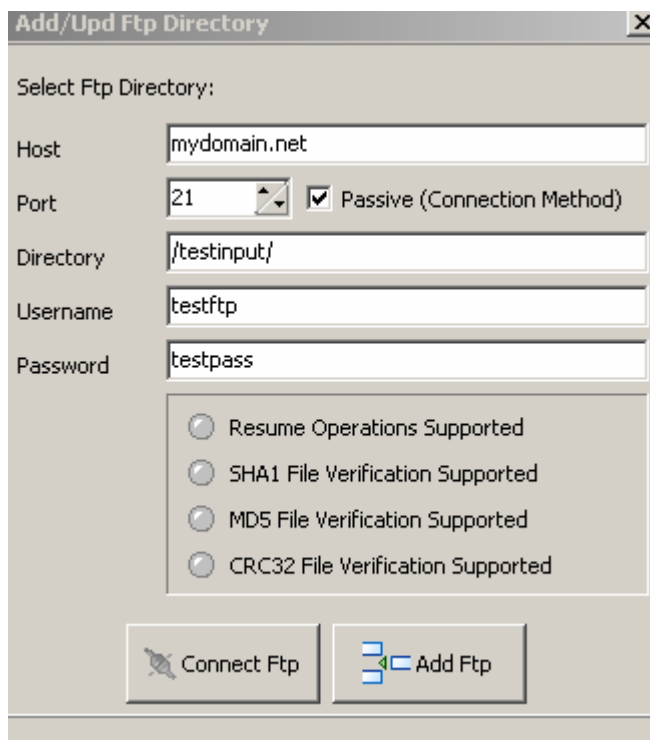
#2 Lets look at each INPUT tab, the first INPUT TAB is "Input"



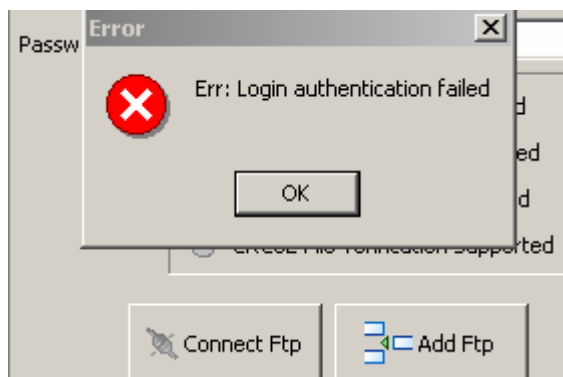
There are two buttons on the input tab's upper right corner. The Win button is used to define where you want to move data from on your local computer, or a computer on your network. Select the directory and click the add button.



The Ftp button is used to define a source from a FTP site.

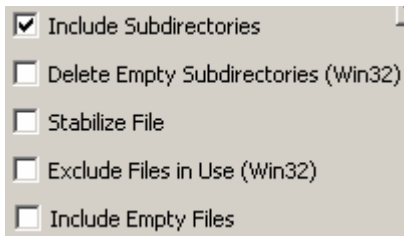


Test your connection by pushing the connect ftp button. If you made an error you will get a message.

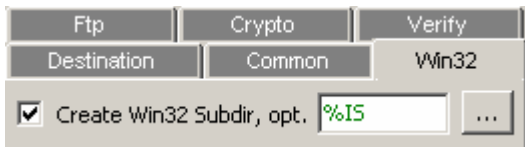


NOTE: You can only define one source per rule. You cannot have both a FTP source and a Win32 source in the same rule. You simply need to use one rule per source.

#3 There are several check boxes on the input tab, lets explore Include Subdirectories.

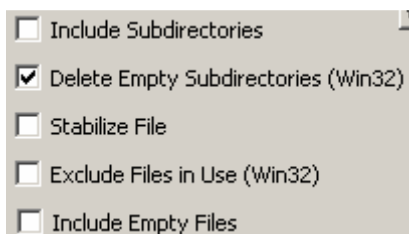


The include subdirectories is used when you want to include files under the subdirectories of the main directory you selected. NOTE: The subdirectories themselves will not be moved unless you specify this in the OUTPUT area (Destination area, Win32 tab, check the Create Win32 Subdir box).



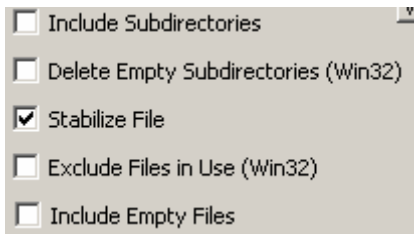
You can define how you want the subdirectory named by clicking the ... button and making a selection.

#4 Delete Empty Subdirectories



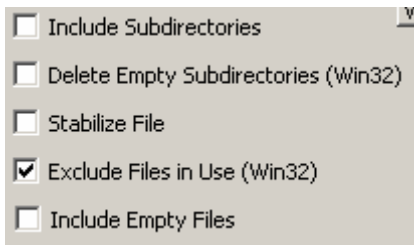
If you select this any empty subdirectory in the Win32 source area will be deleted.

#5 Stabilize Files



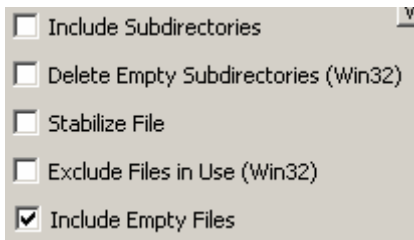
Limagito performs a scan and checks file size. It pauses, then rescans the same files to assure the file is not growing. Files that are growing will not be processed (copy/moved/deleted).

#6 Files locked by another process will not be processed (copy/moved/deleted).



#7 Include Empty Files

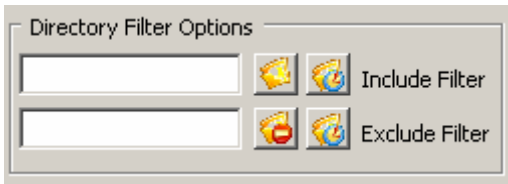
Process zero byte files.



#8 Filters

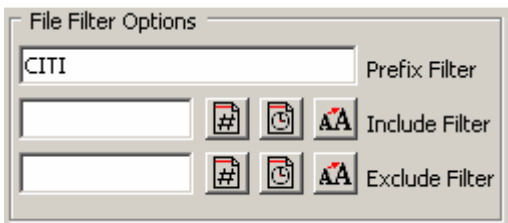
There are two types of filter categories, File filters and directory filters.





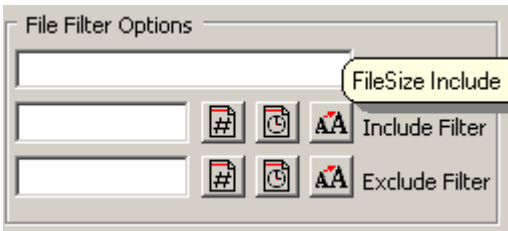
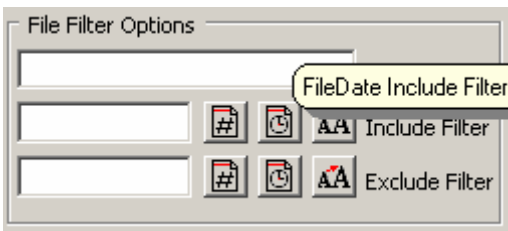
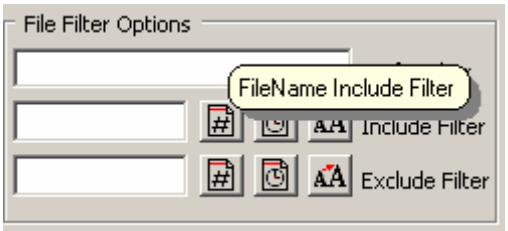
#9 Prefix Filters

In this example, any file starting with "CITI" will be processed. No other files will be processed. A prefix filter is a separate type of include filter.



#10 Include Filter

There are three include filters: FileName Include, FileDate Include and File Size Include.



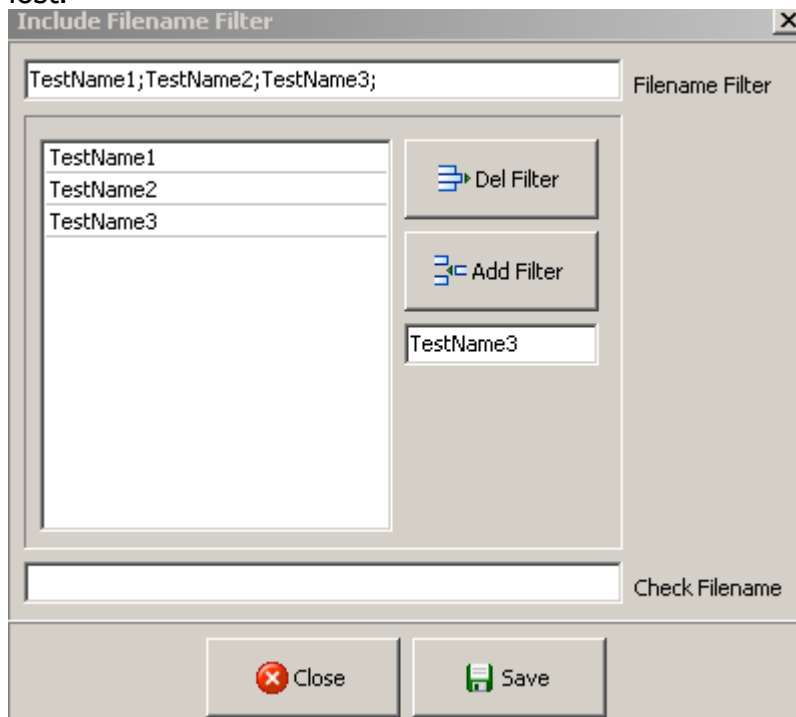
Each set begins with an opening bracket ([]) and ends with a closing bracket (]). Between the brackets are the elements of the set. Each element is a literal character or a range. Ranges are specified by an initial value, a dash (-), and a final value. Do not use spaces or commas to separate the elements of the set. A set must match a single character in the string. The character matches the set if it is the same as one of the literal characters in the set, or if it is in one of the ranges in the set. A character is in a range if it matches the initial value, the final value, or falls between the two values. All comparisons are case-insensitive. If the first character after the opening bracket of a set is an exclamation point (!), then the set matches any character that is not in the set.

Wildcards are asterisks (*) or question marks (?). An asterisk matches any number of characters. A question mark matches a single arbitrary character.

#11 The FileName Filter is used to include files that match your criteria. Wildcards can be used. An asterisk (*) will match any number of characters, a question mark (?) will only match one character.

So in this example instead of naming each TestName file, you could have used TestName* or TestName?.

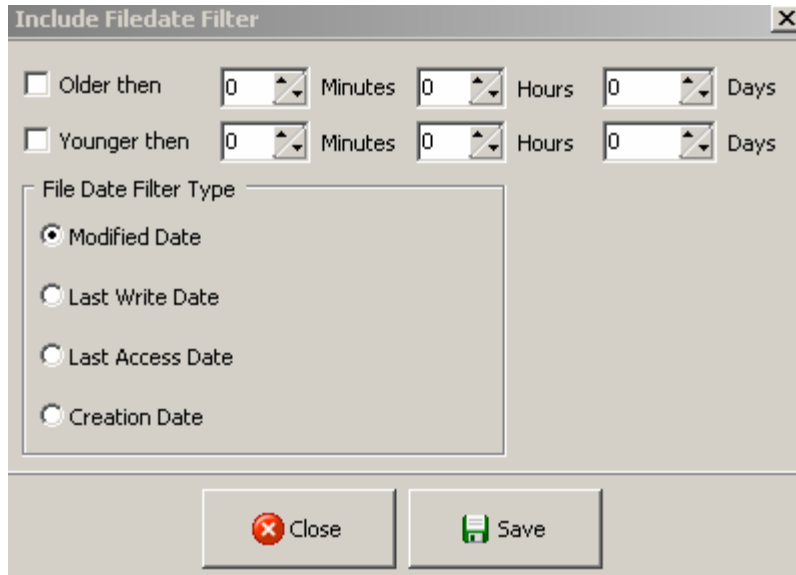
You must click Save after you have entered your filter criteria otherwise it will be lost.



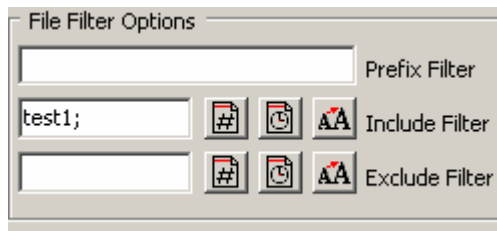
With the Check Filename you can check your filter. You can enter a dummy filename to test it. If it's green the filter matches.

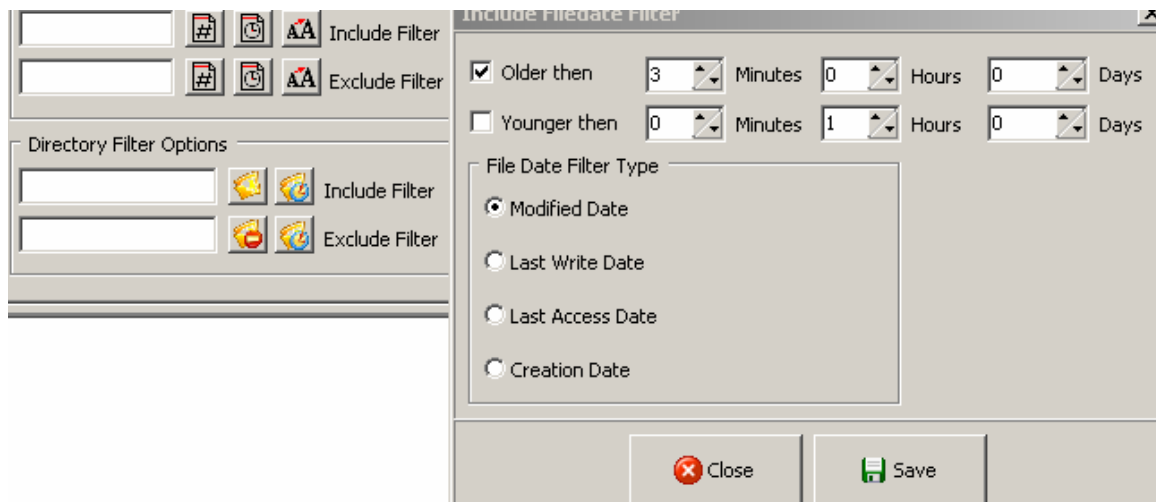
#12 The FileDate Filter

You can include files that are older than the time criteria and/or younger than the time criteria based upon the modified, last write, last access or creation date.



If I do a filename filter the filter criteria shows on the main screen, but if I do a date or size filter, neither appear. The purpose of having that box on the screen is so you know a filter is on I assume? ***One would not know date or size was being used.*** [\[Lima Agito: This is correct\]](#)

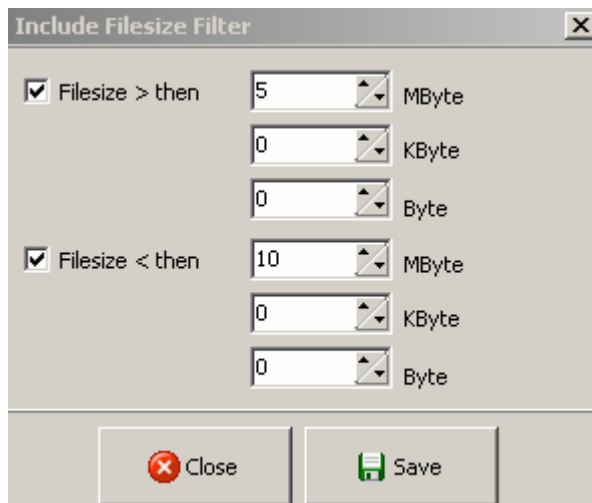




#13 The FileSize Filter

You can include files that are larger than and/or less than the criteria you specify.

I'm assuming you can do both in one rule? [\[Lima Agito: Yes you can\]](#)



QUESTION:

Can you do a filename AND filedate AND filesize filter include in the same rule? Can you do multiple excludes and multiple includes in the same rule? Can you use a prefix filter with an include or exclude?

[\[Lima Agito: Yes you can\]](#)

#14 Exclude File Filters

The exclude file filter operates exactly like the include (except files will be excluded on the criteria).



Can you use and include and exclude filter? [Lima Agito: Yes you can]

#15 Directory Filters

Directory filters work exactly like the include/exclude file filters. They are used to include and/or exclude subdirectories. You need to enable the 'Include Subdirectories' on the input tab first. These filters have the name and date criteria's (size is not a criteria option for the directory filters).

I'm assuming both include and exclude directory filters can be used with the same rule? Also assume directory and file filters can be used. In short, you can use any combination of include, exclude, file, directory filters????
[Lima Agito: Yes, Isn't that nice ;)]

[Lima Agito: I would like to thank the author 'Southwest Transaction Group' for this document. It's always nice to see that other people are interested in my application. <http://www.oberman.info/swt/index.htm>]